



Chipsmall Limited consists of a professional team with an average of over 10 year of expertise in the distribution of electronic components. Based in Hongkong, we have already established firm and mutual-benefit business relationships with customers from,Europe,America and south Asia,supplying obsolete and hard-to-find components to meet their specific needs.

With the principle of "Quality Parts,Customers Priority,Honest Operation,and Considerate Service",our business mainly focus on the distribution of electronic components. Line cards we deal with include Microchip,ALPS,ROHM,Xilinx,Pulse,ON,Everlight and Freescale. Main products comprise IC,Modules,Potentiometer,IC Socket,Relay,Connector.Our parts cover such applications as commercial,industrial, and automotives areas.

We are looking forward to setting up business relationship with you and hope to provide you with the best service and solution. Let us make a better world for our industry!



Contact us

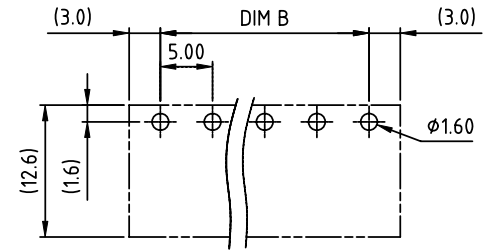
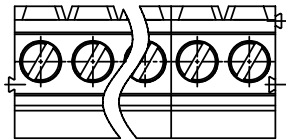
Tel: +86-755-8981 8866 Fax: +86-755-8427 6832

Email & Skype: info@chipsmall.com Web: www.chipsmall.com

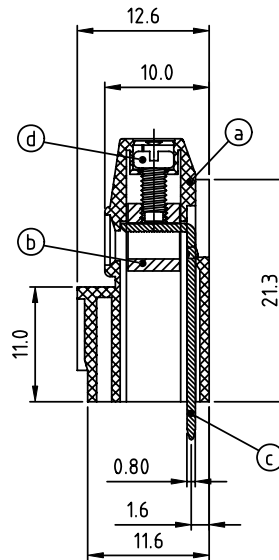
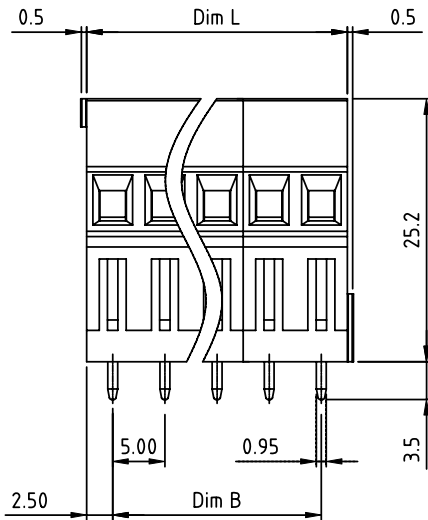
Address: A1208, Overseas Decoration Building, #122 Zhenhua RD., Futian, Shenzhen, China



PRODUCT NUMBER	PITCH
YExx01x000J0G	5.00 mm



RECOMMENDED P.C.B LAYOUT
TOP VIEW



Material:

- Item Ⓐ Terminal housing: Thermoplastic (UL 94V-0)
- Item Ⓑ Clamp: Brass, Ni plated
- Item Ⓒ Solder pin: Brass, Tin plated
- Item Ⓓ Terminal screw: Steel, Zinc plating"- "slot type

Electrical cULus

- Voltage rating: 300VAC
- Current rating: 10A
- Wire range:
 - Solid wire(AWG): 12-24
 - Stranded wire(AWG): 12-24
- Torque(Lb-In): 3.5
- Screw: M2.5
- Wire strip length: 6-7mm
- Withstanding Voltage: 1.6KV
- Operating temperature: -40°C to +115°C
- Soldering temperature: 260°C±5°C/5 Sec
- Safety Approval:

DIMENSION

Dim L	Nx5.0
Dim B	(N-1)x5.0

N=Number of poles

Poles	Tolerance
2p~6p	±0.15
7p~12p	±0.25
13p~18p	±0.35
19p~24p	±0.40

PART NO.: YE xx 0 1 x 0 00J0 G

End stackable	0	Color	RoHS compliant (lead<4%) In copper Alloy
No. of poles	2	Black (RAL9005)	
02 2 poles	3	Red (RAL3001/D)	
03 3 poles	4	Orange(RAL2011/P)	
...	5	Yellow(RAL1018/A)	
...	6	Green(RAL6018/T)	
24 24 poles	7	Blue (RAL5015/A)	
	8	Grey(RAL7035/D)	
	9	White(RAL1102)	
	C	Green(RAL6018/U)	

mat'l. code		surface ASME Y14.5 ✓	tolerance ASME Y14.5	projection 	product family TERMINAL BLOCK
ltr	ecn no	dr	date	title TERMINAL BLOCK RISING CLAMP, 180D WIRE INLET, END STACKABLE	
tolerances unless otherwise specified				scale MM	
angles		X.±0.5		dwg no YExx01x000J0G	
X*±1*		X.XX±0.1		sheet 1 of 1 size A4	
dr		EVIN ZHONG	041014	FCI logo	
enrg		EVIN ZHONG	041014	type CUSTOMER Drawing	
chr		HANKE FENG	041014		
appd		SHI JUN	041014		
sheet index	revision sheet	A	1		