



Chipsmall Limited consists of a professional team with an average of over 10 year of expertise in the distribution of electronic components. Based in Hongkong, we have already established firm and mutual-benefit business relationships with customers from,Europe,America and south Asia,supplying obsolete and hard-to-find components to meet their specific needs.

With the principle of "Quality Parts,Customers Priority,Honest Operation,and Considerate Service",our business mainly focus on the distribution of electronic components. Line cards we deal with include Microchip,ALPS,ROHM,Xilinx,Pulse,ON,Everlight and Freescale. Main products comprise IC,Modules,Potentiometer,IC Socket,Relay,Connector.Our parts cover such applications as commercial,industrial, and automotives areas.

We are looking forward to setting up business relationship with you and hope to provide you with the best service and solution. Let us make a better world for our industry!



## Contact us

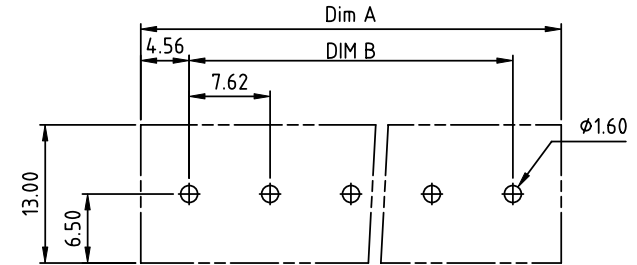
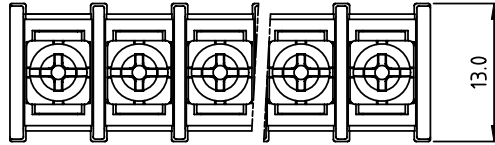
Tel: +86-755-8981 8866 Fax: +86-755-8427 6832

Email & Skype: info@chipsmall.com Web: www.chipsmall.com

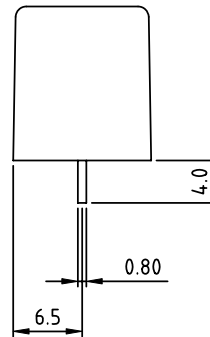
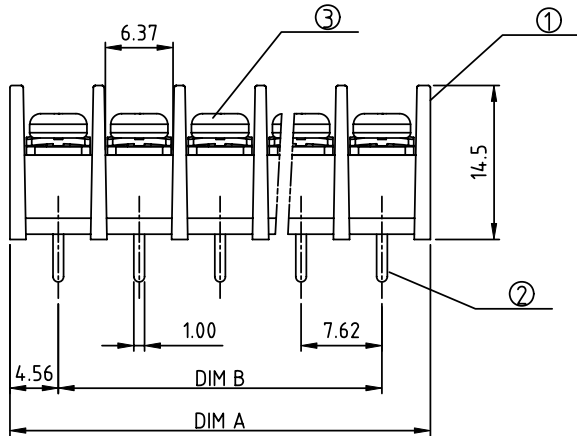
Address: A1208, Overseas Decoration Building, #122 Zhenhua RD., Futian, Shenzhen, China



PRODUCT NUMBER	PITCH
YK313xx0x0JOG	7.62 mm



RECOMMENDED P.C.B LAYOUT  
TOP VIEW



MATERIALS & ELECTRICAL  
 RATED VOLTAGE & CURRENT: 250 V, 15 A  
 WITHSTAND VOLTAGE: AC 2000 V/Min  
 INSULATION RESISTANCE: 1000 M $\Omega$  OR MORE AT DC 500 V  
 OPERATING TEMPERATURE RANG: -40 °C ~ +115 °C  
 SCREW TORQUE VALUE: 5.3 Lb-In.  
 WIRE RANGE: 22 - 16 AWG  
 1) HOUSING: THERMOPLASTIC, UL 94 V-0 BLACK  
 2) TERMINAL: BRASS, 0.8t  
 3) TERMINAL SCREWS: STEEL, M3  
 APPROVAL:

DIMENSION

Dim A	(N-1) $\times$ 7.62+9.12
Dim B	(N-1) $\times$ 7.62

N=Number of poles

Poles	Tolerance
2p-5p	$\pm$ 0.20
6p-10p	$\pm$ 0.25
11p-16p	$\pm$ 0.35
17p-24p	$\pm$ 0.40
25p-30p	$\pm$ 0.50

PART NO.: YK 313xx 0 x 0 JOG

No. of poles  
 02 2 poles  
 03 3 poles  
 ...  
 30 30 poles

Plated		
Code	Terminal	Screw
0	G/F	G/F
1	G/F	Zinc
2	Tin	G/F
3	Tin	Zinc

RoHS compliant  
 (lead<4%)  
 In copper Alloy

mat'l. code		surface ASME Y14.5	tolerance ASME Y14.5	projection 	product family TERMINAL BLOCK
ltr	ecn no	dr	date	tolerances unless otherwise specified	title TERMINAL BLOCK
				angles 	BARRIER TYPE
				X $\pm$ 1°	scale MM
		dr	EVAN LU	061014	dwg no YK313xx0x0JOG
		enr	EVAN LU	061014	sheet 1 of 1
		chr	HANKE FENG	061014	size A4
		appd	SHI JUN	061014	type CUSTOMER Drawing
sheet index	revision sheet	A	1		