



Chipsmall Limited consists of a professional team with an average of over 10 year of expertise in the distribution of electronic components. Based in Hongkong, we have already established firm and mutual-benefit business relationships with customers from,Europe,America and south Asia,supplying obsolete and hard-to-find components to meet their specific needs.

With the principle of “Quality Parts,Customers Priority,Honest Operation,and Considerate Service”,our business mainly focus on the distribution of electronic components. Line cards we deal with include Microchip,ALPS,ROHM,Xilinx,Pulse,ON,Everlight and Freescale. Main products comprise IC,Modules,Potentiometer,IC Socket,Relay,Connector.Our parts cover such applications as commercial,industrial, and automotives areas.

We are looking forward to setting up business relationship with you and hope to provide you with the best service and solution. Let us make a better world for our industry!



## Contact us

Tel: +86-755-8981 8866 Fax: +86-755-8427 6832

Email & Skype: [info@chipsmall.com](mailto:info@chipsmall.com) Web: [www.chipsmall.com](http://www.chipsmall.com)

Address: A1208, Overseas Decoration Building, #122 Zhenhua RD., Futian, Shenzhen, China





Copyright FCI.



FCIconnect.com

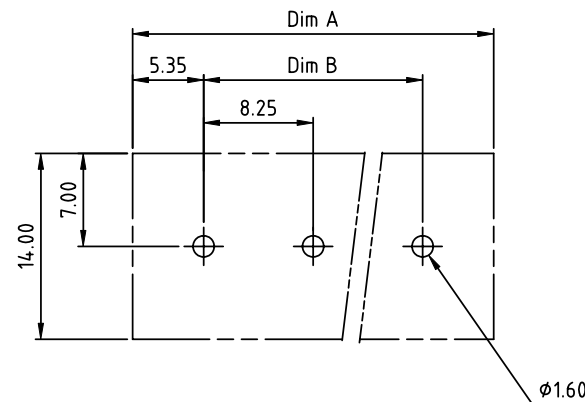
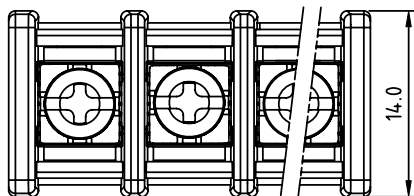


1 | 2

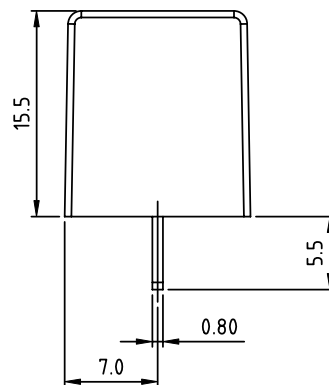
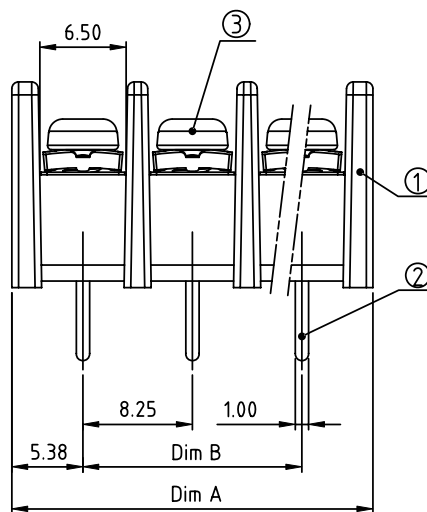
3 |

4

PRODUCT NUMBER	PITCH
YK412xx0x0J0G	8.25 mm



RECOMMENDED P.C.B LAYOUT  
TOP VIEW



MATERIALS & ELECTRICAL  
RATED VOLTAGE & CURRENT: 300 V, 20 A  
WITHSTAND VOLTAGE: AC 2000 V/Min  
INSULATION RESISTANCE: 1000 MΩ OR MORE AT DC 500 V  
OPERATING TEMPERATURE RANG: -40 °C ~ +115 °C  
SCREW TORQUE VALUE: 8.8 Lb-In.  
WIRE RANGE: 22 - 12 AWG  
1) HOUSING: THERMOPLASTIC, UL 94 V-0 BLACK  
2) TERMINAL: BRASS, 0.8t  
3) TERMINAL SCREWS: STEEL, M3  
APPROVAL: US

DIMENSION

Dim A	N×8.25±2.5
Dim B	(N-1)×8.25

N=Number of poles

Poles	Tolerance
2p-5p	±0.25
6p-10p	±0.35
11p-18p	±0.40
19p-30p	±0.50

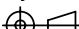


PART NO.: YK 412xx 0 x 0 J0G

No. of poles  
02 2 poles  
03 3 poles  
...  
30 30 poles

Plated

Code	Terminal	Screw
0	G/F	G/F
1	G/F	Zinc
2	Tin	G/F
3	Tin	Zinc

RoHS compliant  
(lead<4%)  
In copper Alloy

mat'l. code				surface ASME Y14.5 ✓		tolerance ASME Y14.5		projection 		product family TERMINAL BLOCK															
ltr		ecn no		dr		date		tolerances unless otherwise specified								title TERMINAL BLOCK									
								angles <div>vertical</div>		X.±0.5						BARRIER TYPE									
										X.X±0.3															
										X.XX±0.1															
										scale				dwg no						sheet 1 of 1				size	
														YK412xx0x0J0G						A					