



Chipsmall Limited consists of a professional team with an average of over 10 year of expertise in the distribution of electronic components. Based in Hongkong, we have already established firm and mutual-benefit business relationships with customers from,Europe,America and south Asia,supplying obsolete and hard-to-find components to meet their specific needs.

With the principle of “Quality Parts,Customers Priority,Honest Operation,and Considerate Service”,our business mainly focus on the distribution of electronic components. Line cards we deal with include Microchip,ALPS,ROHM,Xilinx,Pulse,ON,Everlight and Freescale. Main products comprise IC,Modules,Potentiometer,IC Socket,Relay,Connector.Our parts cover such applications as commercial,industrial, and automotives areas.

We are looking forward to setting up business relationship with you and hope to provide you with the best service and solution. Let us make a better world for our industry!



Contact us

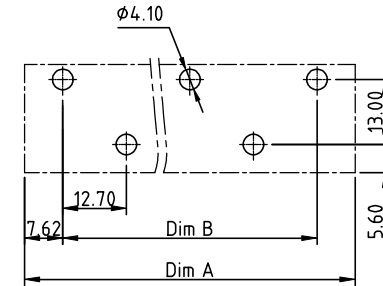
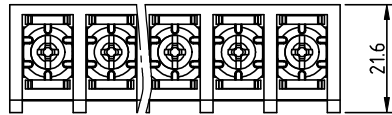
Tel: +86-755-8981 8866 Fax: +86-755-8427 6832

Email & Skype: info@chipsmall.com Web: www.chipsmall.com

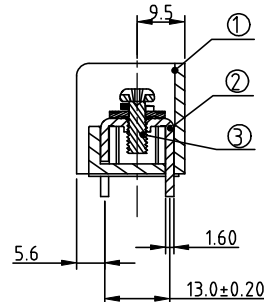
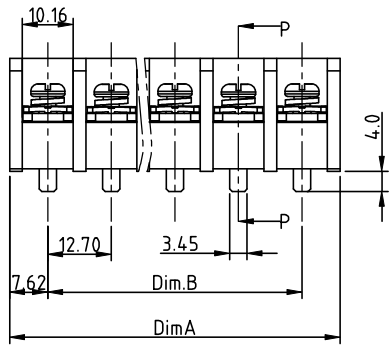
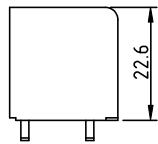
Address: A1208, Overseas Decoration Building, #122 Zhenhua RD., Futian, Shenzhen, China



| | |
|----------------|----------|
| PRODUCT NUMBER | PITCH |
| YK881xx0x0J0G | 12.70 mm |



RECOMMENDED P.C.B LAYOUT
TOP VIEW



SECTION P-P

MATERIALS & ELECTRICAL
 RATED VOLTAGE & CURRENT: 600 V, 45A
 WITHSTAND VOLTAGE: AC 2500 V/Min
 INSULATION RESISTANCE: 1000 MΩ OR MORE AT DC 500 V
 OPERATING TEMPERATURE RANG: -40 °C ~ +115 °C
 SCREW TORQUE VALUE: 16lb-in
 WIRE RANGE: 18 - 8 AWG
 1) HOUSING: THERMOPLASTICS, UL94-V0 BLACK
 2) TERMINAL: BRASS, 1.6t
 3) TERMINAL SCREWS WITH WASHER: STEEL, M4.0
 APPROVAL: us

DIMENSION

| | |
|-------|-------------|
| Dim A | Nx12.7+2.54 |
| Dim B | (N-1)x12.7 |

N=Number of poles

| Tolerance Poles | Dim A | Dim B |
|-----------------|-------|-------|
| 3p/5P/7P | ±0.40 | ±0.30 |
| 9p/11P/13P/15p | ±0.50 | ±0.40 |
| 17p/19p | ±0.60 | ±0.55 |

PART NO.: YK 881 xx 0 x x J0G

No. of poles
 03 3 poles
 05 5 poles

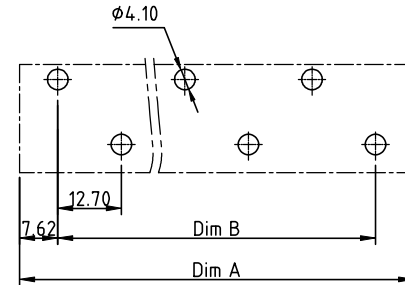
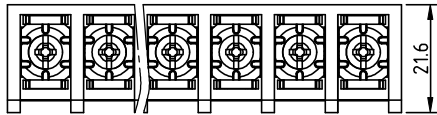
 19 19 poles

| Plated | | |
|--------|----------|-------|
| Code | Terminal | Screw |
| 0 | G/F | G/F |
| 1 | G/F | Zinc |
| 2 | Tin | G/F |
| 3 | Tin | Zinc |

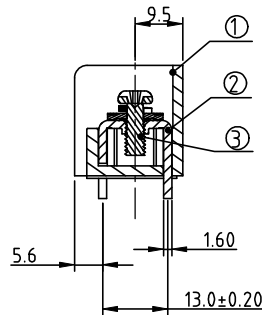
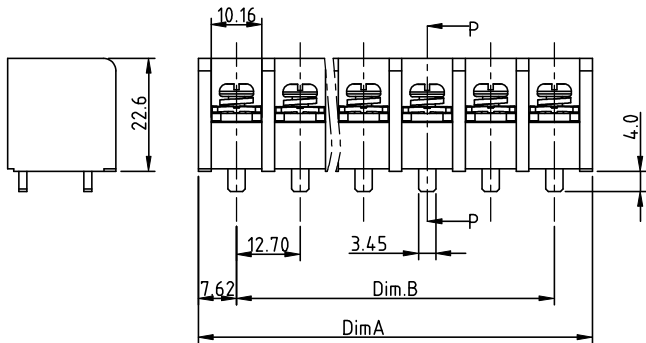
RoHS compliant
 (lead<4%)
 In copper Alloy

| | | | | | | | | | | | |
|--------------------|--|--|--|---------------------------------------|--|----------------------|--|------------|--|--|--|
| mat'l. code | | | | surface ASME Y14.5 ✓ | | tolerance ASME Y14.5 | | projection | | product family | |
| ltr ecn no dr date | | | | tolerances unless otherwise specified | | angles | | MM | | TERMINAL BLOCK | |
| | | | | X±1* | | X.±0.5 | | | | title | |
| | | | | | | X.X±0.3 | | | | TERMINAL BLOCK | |
| | | | | | | X.XX±0.1 | | scale | | BARRIER TYPE, WITH FLANGE&COVER, ODD POLES | |
| | | | | dr EVAN LU 061214 | | enr EVAN LU 061214 | | FCI | | dwg no sheet 1 of 2 size | |
| | | | | chr HANKE FENG 061214 | | appd EVAN LU 061214 | | | | YK881xx0x0J0G A4 | |
| sheet index | | | | revision sheet | | A 1 | | | | type CUSTOMER Drawing | |

| | |
|----------------|----------|
| PRODUCT NUMBER | PITCH |
| YK881xx0x0JOG | 12.70 mm |



RECOMMENDED P.C.B LAYOUT
TOP VIEW



SECTION P-P

MATERIALS & ELECTRICAL
 RATED VOLTAGE & CURRENT: 600 V, 45A
 WITHSTAND VOLTAGE: AC 2500 V/Min
 INSULATION RESISTANCE: 1000 MΩ OR MORE AT DC 500 V
 OPERATING TEMPERATURE RANG: -40 °C ~ +115 °C
 SCREW TORQUE VALUE: 16lb-in
 WIRE RANGE: 18 - 8 AWG
 1) HOUSING: THERMOPLASTICS, UL94-V0 BLACK
 2) TERMINAL: BRASS, 1.6t
 3) TERMINAL SCREWS WITH WASHER: STEEL, M4.0
 APPROVAL: us

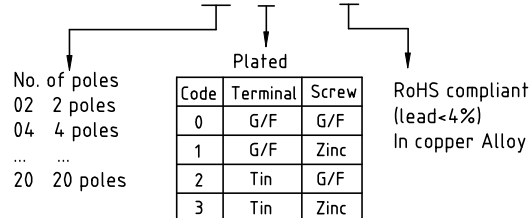
DIMENSION

| | |
|-------|-------------|
| Dim A | N×12.7+2.54 |
| Dim B | (N-1)×12.7 |

N=Number of poles

| Tolerance | Dim A | Dim B |
|-------------|-------|-------|
| Poles | | |
| 2p/4P/6P/8p | ±0.40 | ±0.30 |
| 10p/12P/14P | ±0.50 | ±0.40 |
| 16p/18p/20p | ±0.60 | ±0.55 |

PART NO.: YK 881 xx 0 x x JOG



| | | | | | | | | | |
|-------------|----------------|----------------------|------------|---------------------------------------|----------|------------|---------------|---|-------------------|
| mat'l. code | | surface ASME Y14.5 ✓ | | tolerance ASME Y14.5 | | projection | | product family | |
| ltr | ecn no | dr | date | tolerances unless otherwise specified | | MM | | TERMINAL BLOCK | |
| | | | | angles | X.±0.5 | MM | | title | |
| | | | | flatness | X.X±0.3 | scale | | TERMINAL BLOCK | |
| | | | | total run out | X.XX±0.1 | | | BARRIER TYPE, WITH FLANGE&COVER, EVEN POLES | |
| | | dr | EVAN LU | 061214 | | | dwg no | | sheet 2 of 2 size |
| | | enr | EVAN LU | 061214 | | | YK881xx0x0JOG | | A4 |
| | | chr | HANKE FENG | 061214 | | | type | | CUSTOMER Drawing |
| | | appd | EVAN LU | 061214 | | | | | |
| sheet index | revision sheet | A | 2 | | | | | | |