



Chipsmall Limited consists of a professional team with an average of over 10 year of expertise in the distribution of electronic components. Based in Hongkong, we have already established firm and mutual-benefit business relationships with customers from,Europe,America and south Asia,supplying obsolete and hard-to-find components to meet their specific needs.

With the principle of “Quality Parts,Customers Priority,Honest Operation,and Considerate Service”,our business mainly focus on the distribution of electronic components. Line cards we deal with include Microchip,ALPS,ROHM,Xilinx,Pulse,ON,Everlight and Freescale. Main products comprise IC,Modules,Potentiometer,IC Socket,Relay,Connector.Our parts cover such applications as commercial,industrial, and automotives areas.

We are looking forward to setting up business relationship with you and hope to provide you with the best service and solution. Let us make a better world for our industry!



## Contact us

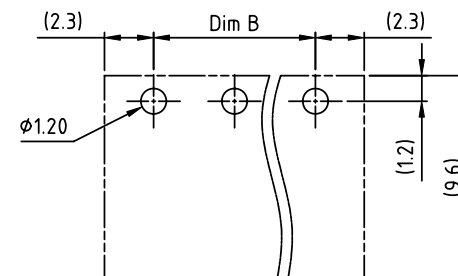
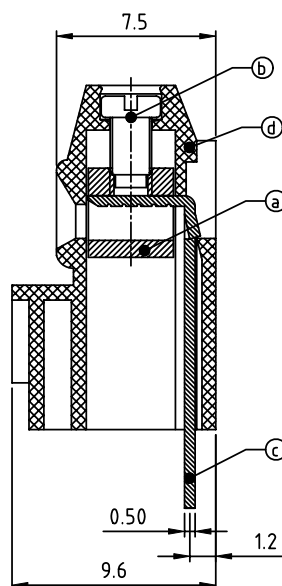
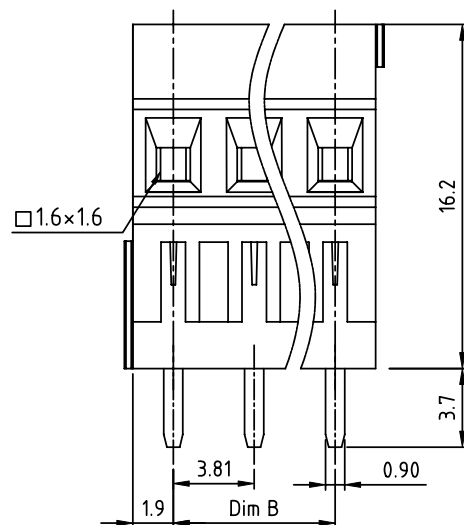
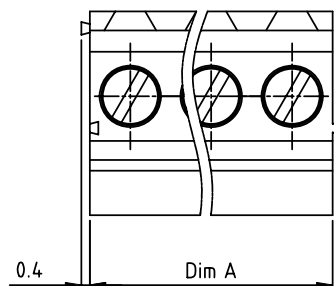
Tel: +86-755-8981 8866 Fax: +86-755-8427 6832

Email & Skype: [info@chipsmall.com](mailto:info@chipsmall.com) Web: [www.chipsmall.com](http://www.chipsmall.com)

Address: A1208, Overseas Decoration Building, #122 Zhenhua RD., Futian, Shenzhen, China



PRODUCT NUMBER	PITCH
YPxx21x000J0G	3.81 mm



RECOMMENDED P.C.B LAYOUT  
TOP VIEW

#### Material

- Item ① Clamp : Brass , Ni plated
- Item ② Terminal screw : Steel Zinc plating "-" slot type
- Item ③ Solder pin : Brass , Tin plated
- Item ④ Terminal housing : Thermoplastic (UL94 V-0)

#### Electrical cULus

- Voltage rating: 300VAC
- Current rating: 10A
- Wire range:
- Solid wire(AWG): 16-24
- Stranded wire(AWG): 16-24
- Torque(Lb-In): 1.7
- Screw: M2
- Wire strip length: 5-6mm
- Withstanding Voltage: 1.6KV
- Operating temperature: -40°C to +115°C
- Soldering temperature: 260°C±5°C/5 Sec
- Safety Approval : cULus

#### Dimension A&B

Dim A	Nx3.81
Dim B	(N-1)x3.81

N=Number of poles

Poles	Dim A&B Tolerance
2P-5P	±0.15
6P-10P	±0.20
11P-16P	±0.30
17P-24P	±0.40

PART NO.: YP xx 2 1 x 0 00J0 G

Solid Block	No. of poles	Color	RoHS compliant (lead<4%) In copper Alloy
0	2	Black (RAL9005)	
2	3	Red (RAL3001/D)	
3	4	Orange(RAL2011/P)	
4	5	Yellow(RAL1018/A)	
5	6	Green(RAL6018/T)	
6	24	Blue (RAL5015/A)	
8		Grey(RAL7035/D)	
9		White(RAL1102)	
C		Green(RAL6018/U)	

mat'l. code				surface	tolerance	projection	product family			
ltr	ecn	no	dr	date	ASME Y14.5 ✓	ASME Y14.5	TERMINAL BLOCK			
					tolerances unless otherwise specified					
					angles	X.±0.5	title			
					±0.1	X.X±0.3	TERMINAL BLOCK			
					X*±1°	X.XX±0.1	scale			
					dr	EVIN ZHONG 040714	FCI			
					enrg	EVIN ZHONG 040714				
					chr	HANKE FENG 040714				
					appd	SHI JUN 040714				
sheet index	revision	A					product family			
	sheet	1					TERMINAL BLOCK			
							title			
							TERMINAL BLOCK			
							RISING CLAMP,180D WIRE INLET,SOLID TYPE			
							dwg no			
							YPxx21x000J0G			
							sheet 1 of 1 size			
							A4			
							type			
							CUSTOMER Drawing			