



Chipsmall Limited consists of a professional team with an average of over 10 year of expertise in the distribution of electronic components. Based in Hongkong, we have already established firm and mutual-benefit business relationships with customers from,Europe,America and south Asia,supplying obsolete and hard-to-find components to meet their specific needs.

With the principle of “Quality Parts,Customers Priority,Honest Operation,and Considerate Service”,our business mainly focus on the distribution of electronic components. Line cards we deal with include Microchip,ALPS,ROHM,Xilinx,Pulse,ON,Everlight and Freescale. Main products comprise IC,Modules,Potentiometer,IC Socket,Relay,Connector.Our parts cover such applications as commercial,industrial, and automotives areas.

We are looking forward to setting up business relationship with you and hope to provide you with the best service and solution. Let us make a better world for our industry!



Contact us

Tel: +86-755-8981 8866 Fax: +86-755-8427 6832

Email & Skype: info@chipsmall.com Web: www.chipsmall.com

Address: A1208, Overseas Decoration Building, #122 Zhenhua RD., Futian, Shenzhen, China



MICRO SWITCH

FREEPORT ILLINOIS, U.S.A
A DIVISION OF HONEYWELL
FED. MFG. CODE 91929

SWITCH-BASIC

CATALOG LISTING

YZ-RX58-D5

YZ-RX58-D5

M

DRAWING
NUMBER

3

ISSUE

RELEASE NO. PR-15024

REPLACES X85318-YZ

CHECK

CHECK

REVISIONS

CO	77592
DAW	15 AUG 94
A	0001191
JLH	20AUG03

CHECK

28 AUG 86

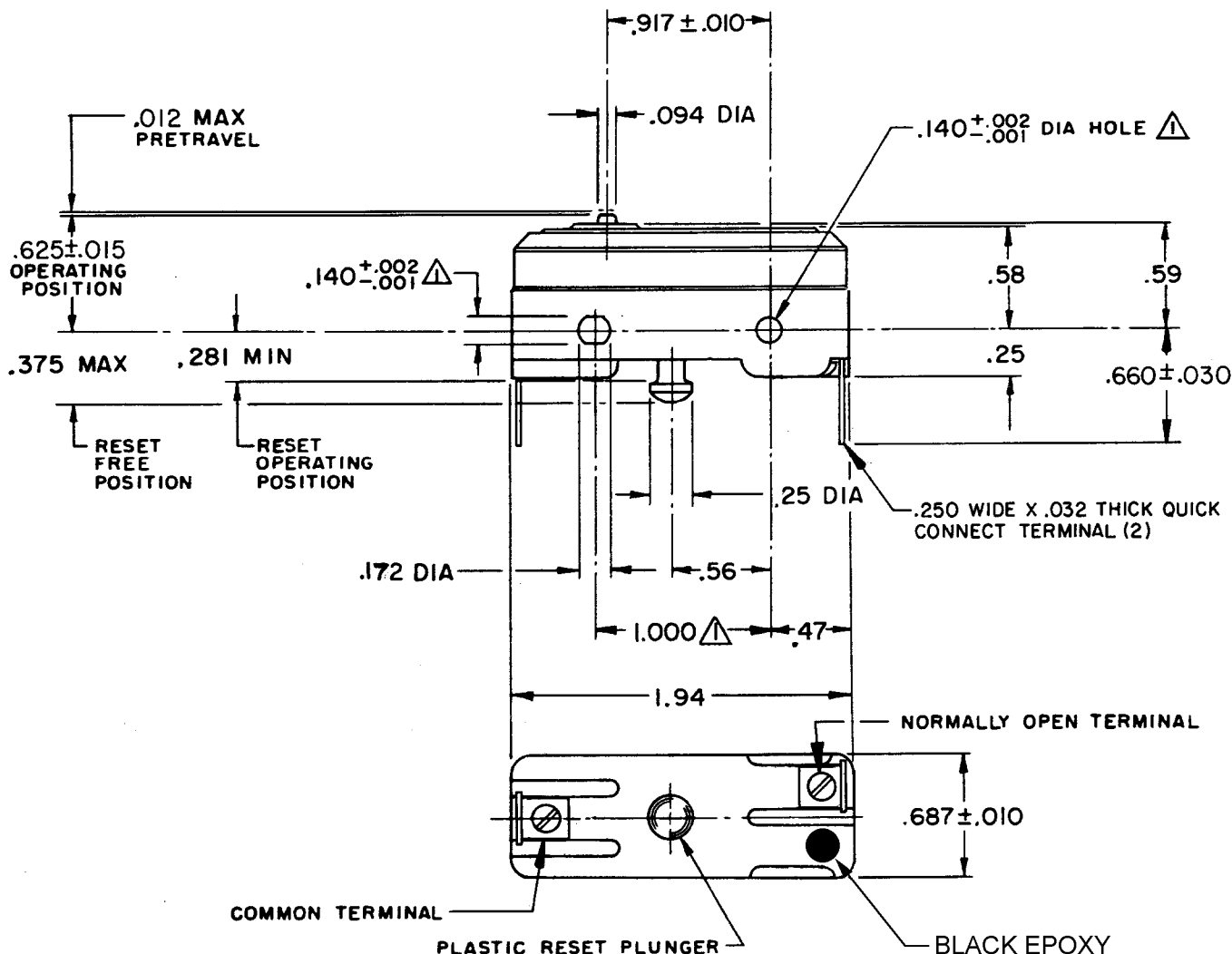
CHECK

CHECK

CHECK

CHECK

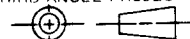
RASTER



NOTE -
▲ - MOUNTING HOLES WILL ACCEPT PINS OR SCREWS
OF .139 MAX DIA ON 1.000 ± .002 CENTERS

THIS DRAWING COVERS A PROPRIETARY ITEM AND IS THE PROPERTY OF MICRO SWITCH, A DIVISION OF HONEYWELL. THIS DRAWING IS NOT TO BE COPIED OR USED WITHOUT THE APPROVAL OF MICRO SWITCH.

THIRD ANGLE PROJECTION



CHARACTERISTICS

OPERATING FORCE----- 4 OZ MAX
OVERTRAVEL----- .005 MIN

RESET CHARACTERISTICS

OPERATING FORCE----- 2-10 OZ
OVERTRAVEL----- .015 MIN

ELECTRICAL DATA

CONTACT ARRANGEMENT
SINGLE POLE NORMALLY OPEN
MAINTAINED CONTACT

L67

15A 125, 250 OR 480 VAC
1/4 HP 125 VAC, 1/2 HP 250 VAC
1/2A 125 VDC, 1/4A 250 VDC



SCALE FULL

DO NOT SCALE PRINT

TOLERANCES
APPLY TO DESIGN UNITS. CONVERSIONS ARE ONLY FOR
REFERENCE. UNLESS NOTED, TOLERANCES ARE ±

DIM.	TOL.	DIM.	TOL.
mm	mm/in	in	mm/in
NO PLACES	X	1/64	
ONE PLACE	X,X	0.4/018	X,X
TWO PLACES	X,XX	0.15/.008	X,XX
THREE PLACES	X,XXX		X,XXX
ANGLES			

SI METRIC

US CUSTOMARY

DESIGN UNITS



WEIGHT