



Chipsmall Limited consists of a professional team with an average of over 10 year of expertise in the distribution of electronic components. Based in Hongkong, we have already established firm and mutual-benefit business relationships with customers from,Europe,America and south Asia,supplying obsolete and hard-to-find components to meet their specific needs.

With the principle of "Quality Parts,Customers Priority,Honest Operation,and Considerate Service",our business mainly focus on the distribution of electronic components. Line cards we deal with include Microchip,ALPS,ROHM,Xilinx,Pulse,ON,Everlight and Freescale. Main products comprise IC,Modules,Potentiometer,IC Socket,Relay,Connector.Our parts cover such applications as commercial,industrial, and automotives areas.

We are looking forward to setting up business relationship with you and hope to provide you with the best service and solution. Let us make a better world for our industry!



Contact us

Tel: +86-755-8981 8866 Fax: +86-755-8427 6832

Email & Skype: info@chipsmall.com Web: www.chipsmall.com

Address: A1208, Overseas Decoration Building, #122 Zhenhua RD., Futian, Shenzhen, China



EMC Components

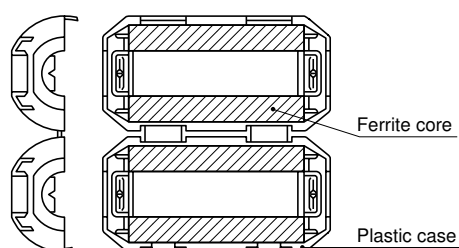
Clamp Filters For Cable

ZCAT Series

FEATURES

- Unique plastic case ensures simple, convenient installation and includes a self-holding mechanism to prevent slippage on cables.
- Ferrite core provides excellent absorption of high-frequency EMC.
- Highly effective as countermeasure against common mode EMC without adverse effect on signal quality.
- Large core size prevents saturation during large signal surges.

INTERNAL CONSTRUCTION



APPLICATIONS

Personal computers, word processors, monitors, hard disk drives, digital telephones, audio devices, electronic musical instruments, video games, copiers and facsimiles.

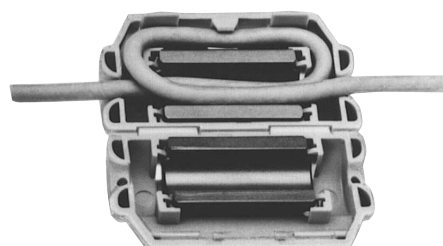
PRODUCT IDENTIFICATION

ZCAT 24 36 - 13 30 A - M - BK
(1) (2) (3) (4) (5) (6) (7) (8)

- (1) Series name
- (2) Outer dimensions(mm)
- (3) Length(mm)
- (4) Inner dimensions(mm)
- (5) Material code
- (6) Fixed type code
 - A: Cable fixed
Hold the cable to secure it with the main body
 - AP:Cable fixed
(with lock mechanism)
 - B: Clamp fixed
 - C: Cable coil securing type
(Coil the cable one time within the case to fix it/with lock mechanism.)
 - D: Flat cable type
 - DT: Flat cable type (Hold with adhesive pad.)
 - Non code: Band fixed
(Secure the cable and main body with the nylon belt.)
- (7) TDK internal code
 - M:Standard type
 - Non code: High impedance type
- (8) Outer color code
 - BK: Black
 - Non code: Gray



ZCAT-C TYPE



PACKAGING STYLE AND QUANTITIES

Part No.	Quantity
ZCAT3035	140 pieces/box
ZCAT2017-B	350 pieces/box
ZCAT2235	350 pieces/box
ZCAT2436	350 pieces/box
ZCAT2032	400 pieces/box
ZCAT2035	400 pieces/box
ZCAT2132	400 pieces/box
ZCAT2749	400 pieces/box
ZCAT1730	500 pieces/box
ZCAT2017	800 pieces/box
ZCAT1325	900 pieces/box
ZCAT1518	900 pieces/box
ZCAT1525	900 pieces/box
ZCAT4625-D	240 pieces/box
ZCAT6819-D	160 pieces/box

⚠ Specifications which provide more details for the proper and safe use of the described product are available upon request.
All specifications are subject to change without notice.

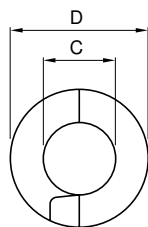
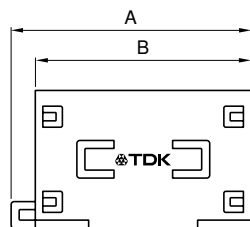
EMC Components

ZCAT Series

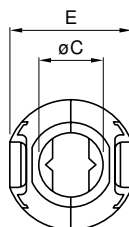
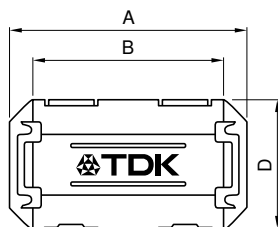
Clamp Filters For Cable

SHAPES AND DIMENSIONS

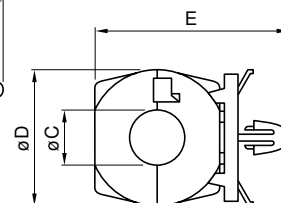
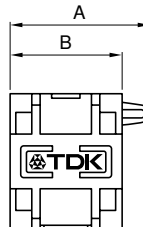
ZCAT TYPE



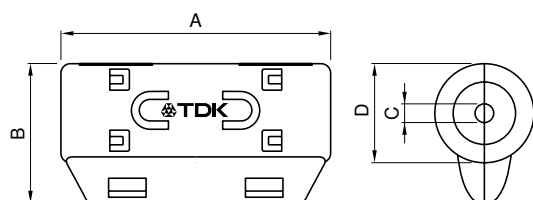
ZCAT-A, ZCAT-AP TYPE



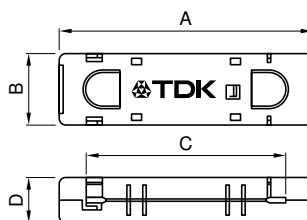
ZCAT-B TYPE



ZCAT-C TYPE



ZCAT-D TYPE



Applicable cable thickness:
1.3mm max.

Dimensions in mm

Part No.	A	B	øC	øD	E	Applicable cable outer dia.	Weight(g)	Impedance freq. characteristics Fig.
ZCAT1518-0730-M(-BK)*1	22±1	18±1	7±1	15±1	–	7max.	6	1
ZCAT1518-0730(BK)*2	22±1	18±1	7±1	15±1	–	7max.	6	2
ZCAT2017-0930-M(-BK)	21±1	17±1	9±1	20±1	–	9max.	11	3
ZCAT2032-0930-M(-BK)*1	36±1	32±1	9±1	19.5±1	–	9max.	22	4
ZCAT2032-0930(-BK)*2	36±1	32±1	9±1	19.5±1	–	9max.	22	5
ZCAT2132-1130-M(-BK)*1	36±1	32±1	11±1	20.5±1	–	11max.	22	6
ZCAT2132-1130(-BK)*2	36±1	32±1	11±1	20.5±1	–	11max.	22	7
ZCAT3035-1330-M(-BK)*1	39±1	34±1	13±1	30±1	–	13max.	63	8
ZCAT3035-1330(-BK)*2	39±1	34±1	13±1	30±1	–	13max.	63	9
ZCAT1525-0430AP-M(-BK)	25±1	20±1	4±1	15±1	11.5±1	2.5 to 4(USB)	7	6
ZCAT1325-0530A-M(-BK)*1	25±1	20±1	5±1	12.8±1	11.2±1	3 to 5(USB)	7	6
ZCAT1325-0530A(-BK)	25±1	20±1	5±1	12.8±1	11.2±1	3 to 5(USB)	7	7
ZCAT1730-0730A-M(-BK)	30±1	23±1	7±1	16.5±1	15±1	4 to 7(USB/IEEE1394)	12	6
ZCAT2035-0930A-M(-BK)*1	35±1	28±1	9±1	19.5±1	17.4±1	6 to 9	22	4
ZCAT2035-0930A(-BK)	35±1	28±1	9±1	19.5±1	17.4±1	6 to 9	22	5
ZCAT2235-1030A-M(-BK)	35±1	28±1	10±1	21.5±1	20±1	8 to 10	27	4
ZCAT2436-1330A-M(-BK)	36±1	29±1	13±1	23.5±1	22±1	10 to 13	29	10
ZCAT2017-0930B-M(-BK)	21±1	17±1	9±1	20±1	28.5±1	9max.	12	3
ZCAT2749-0430C-M(-BK)	49±1	27±1	4.5±1	19.5±1	–	4.5max.	26	11
ZCAT4625-3430D(-BK)	45.5±1	24.5±1	34±1	12±1	–	For 26 wires flat cable	32	12
ZCAT4625-3430DT(-BK)*3	45.5±1	24.5±1	34±1	13±1	–	For 26 wires flat cable	32	12
ZCAT6819-5230D(-BK)	67.5±1	18.5±1	52±1	16±1	–	For 40 wires flat cable	58	12
ZCAT6819-5230DT(-BK)*3	67.5±1	18.5±1	52±1	17±1	–	For 40 wires flat cable	58	12

*1 Set M marking on product.

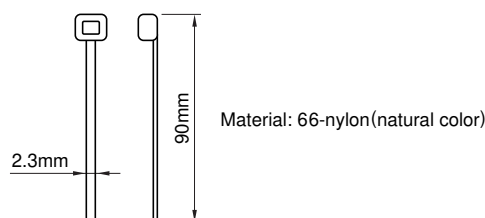
*2 These products are delivered with fixed band.

*3 ZCAT-DT type: Adapted for flat cables and hold with adhesive pad.

• ZCAT-B type: Clamp fixed type installation hole diameter ø4.8 to 4.9mm, thickness of board 0.5 to 2mm.

• ZCAT-AP, ZCAT-C type: Once closed, the case will not be easily opened manually.

STRUCTURE OF THE MOUNTING BAND



△ Specifications which provide more details for the proper and safe use of the described product are available upon request.
All specifications are subject to change without notice.

EMC Components

Clamp Filters For Cable

ZCAT Series

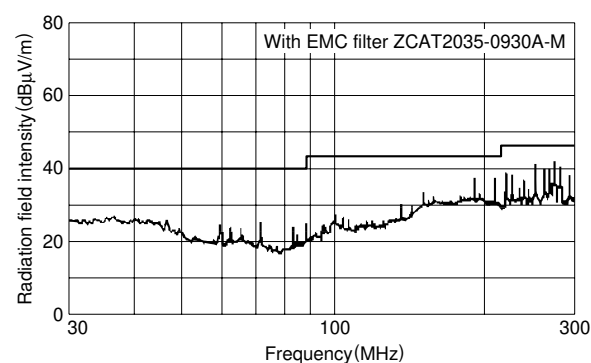
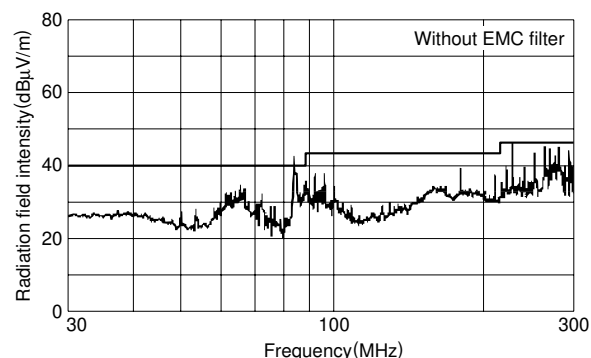
ELECTRICAL CHARACTERISTICS

Part No.	Impedance (Ω) min.[50 to 500MHz]
ZCAT1518-0730-M	35
ZCAT2017-0930-M	35
ZCAT2032-0930-M	80
ZCAT2132-1130-M	50
ZCAT3035-1330-M	100
ZCAT1525-0430AP-M	50
ZCAT1325-0530A-M	50
ZCAT1730-0730A-M	50
ZCAT2035-0930A-M	80
ZCAT2235-1030A-M	80
ZCAT2436-1330A-M	50
ZCAT2017-0930B-M	35
ZCAT2749-0430C-M	80
ZCAT4625-3430D(T)	35
ZCAT6819-5230D(T)	35

- Test conditions: R-X meter at unloaded condition, ϕ 1mm solder plated copper wire passes through.

TYPICAL EMC SUPPRESSION EFFECTS

RADIATION LEVEL vs. FREQUENCY CHARACTERISTICS



TYPICAL ELECTRICAL CHARACTERISTICS

IMPEDANCE vs. FREQUENCY CHARACTERISTICS

ZCAT1518-0730-M

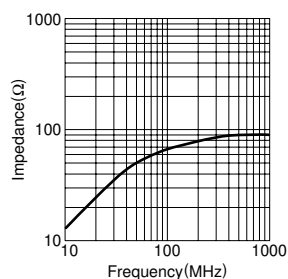


Fig.1

ZCAT1518-0730

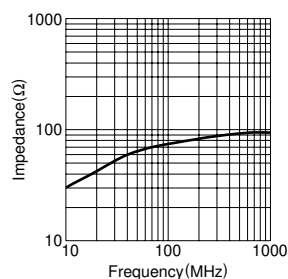


Fig.2

ZCAT2017-0930-M ZCAT2017-0930B-M

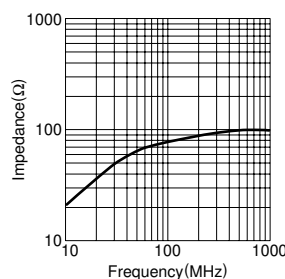


Fig.3

ZCAT2032-0930-M ZCAT2035-0930A-M ZCAT2235-1030A-M

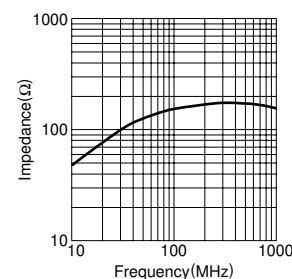


Fig.4

ZCAT2032-0930 ZCAT2035-0930A

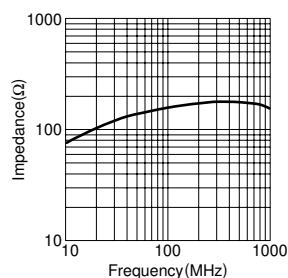


Fig.5

ZCAT2132-1130-M ZCAT1325-0530A-M ZCAT1525-0430AP-M ZCAT1730-0730A-M

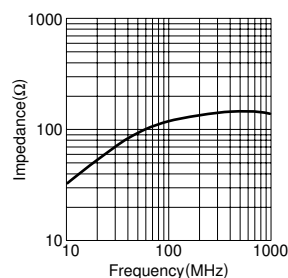


Fig.6

ZCAT2132-1130 ZCAT1325-0530A

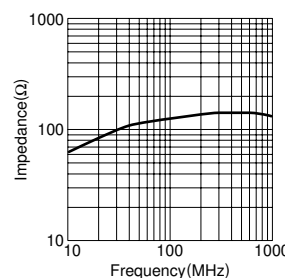


Fig.7

ZCAT3035-1330-M

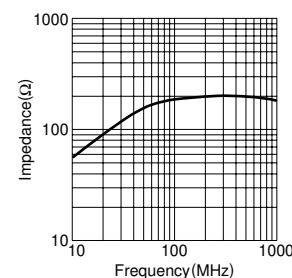


Fig.8

EMC Components

Clamp Filters
For Cable

ZCAT Series

TYPICAL ELECTRICAL CHARACTERISTICS

IMPEDANCE vs. FREQUENCY CHARACTERISTICS

ZCAT3035-1330

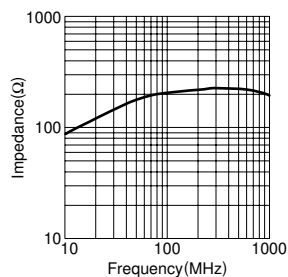


Fig.9

ZCAT2436-1330A-M

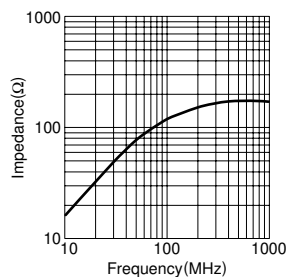


Fig.10

ZCAT2749-0430C-M(2TS)

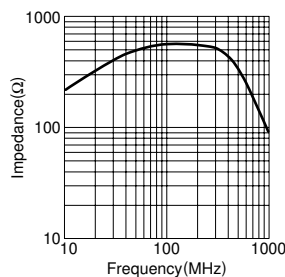


Fig.11

ZCAT4625-3430D
ZCAT6819-5230D

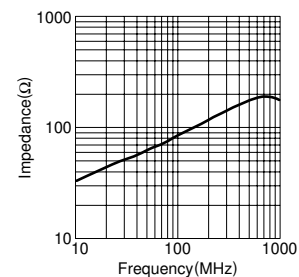


Fig.12