



Chipsmall Limited consists of a professional team with an average of over 10 year of expertise in the distribution of electronic components. Based in Hongkong, we have already established firm and mutual-benefit business relationships with customers from,Europe,America and south Asia,supplying obsolete and hard-to-find components to meet their specific needs.

With the principle of “Quality Parts,Customers Priority,Honest Operation,and Considerate Service”,our business mainly focus on the distribution of electronic components. Line cards we deal with include Microchip,ALPS,ROHM,Xilinx,Pulse,ON,Everlight and Freescale. Main products comprise IC,Modules,Potentiometer,IC Socket,Relay,Connector.Our parts cover such applications as commercial,industrial, and automotives areas.

We are looking forward to setting up business relationship with you and hope to provide you with the best service and solution. Let us make a better world for our industry!



Contact us

Tel: +86-755-8981 8866 Fax: +86-755-8427 6832

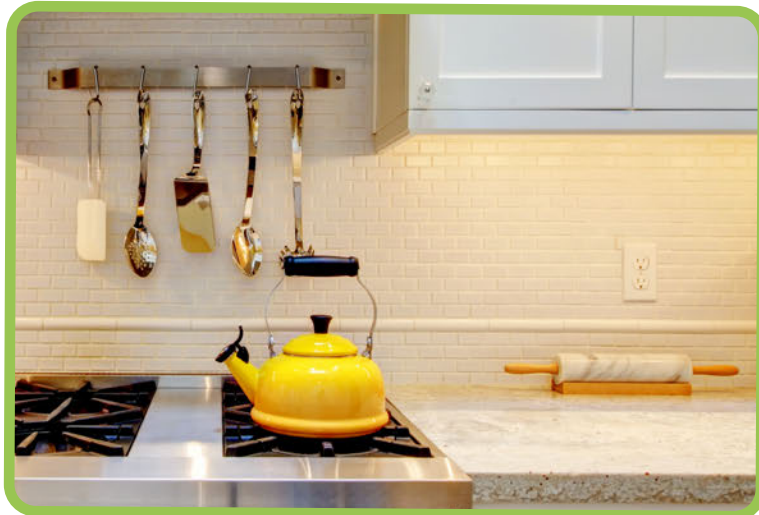
Email & Skype: info@chipsmall.com Web: www.chipsmall.com

Address: A1208, Overseas Decoration Building, #122 Zhenhua RD., Futian, Shenzhen, China



JKL[®] COMPONENTS CORPORATION

ALUMINUM LED CHANNEL KITS

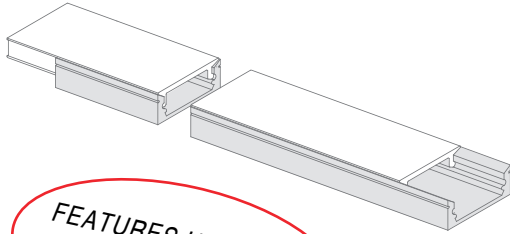


JKL[®] COMPONENTS CORPORATION
Quality Lighting Solutions Since 1972

JKL COMPONENTS CORPORATION
13343 PAXTON ST, PACOIMA, CA 91331
(818)896-0019 • (800) 421-7244
SALES@JKLLAMPS.COM
WWW.JKLLAMPS.COM

ALUMINUM LED CHANNEL KITS

ZFC-17-PC/KIT - Low Profile Channel

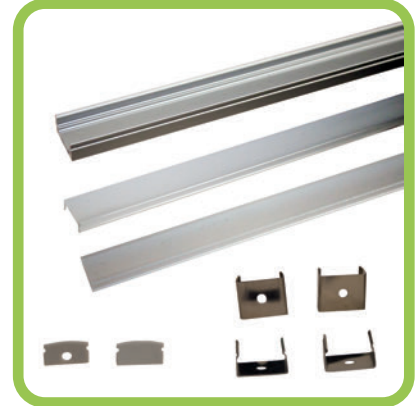


FEATURES HIGH-TEMP POLYCARBONATE LENSES

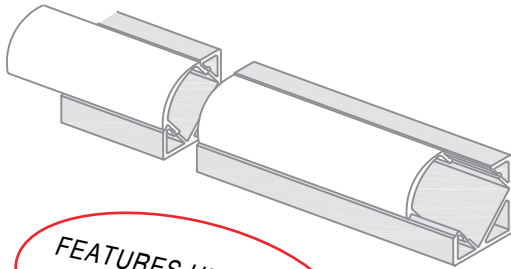
W: 17mm H: 8.5mm L: 1 meter

CONTENTS:

- 1 ZFC-17 Aluminum Channel (1 meter)
- 1 Milk White lens
- 1 Semi Clear lens
- 2 End Caps (1 with hole, 1 without)
- 4 Mounting Clips



ZFC-18C-PC/KIT - Corner Mount Channel

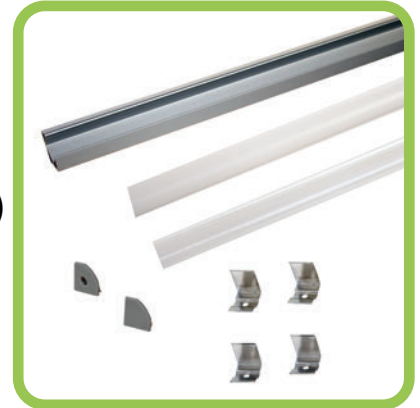


FEATURES HIGH-TEMP POLYCARBONATE LENSES

W: 18.5 mm H: 18.5 mm L: 1 meter

CONTENTS:

- 1 ZFC-18C Aluminum Channel (1 meter)
- 1 Milk White lens
- 1 Clear lens
- 2 End Caps (1 with hole, 1 without)
- 4 Mounting Clips



COMPATIBLE LED FLEX TAPE

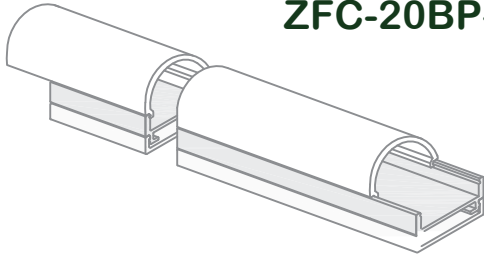


ZFS-84000

JKL LED Flex Series	Voltage	Width of tape	Features	ZFC-17-PC/KIT	ZFC-18C-PC/KIT	ZFC-20BP/KIT	ZFC-21/KIT	ZFC-11WR/KIT
ZFS-8500	12V	8mm	Standard	✓	✓	✓	✓	✓
ZFS-85000HD	12V	8mm	High Density	✓	✓	✓	✓	✓
ZFS-105000-DBW	12V	10mm	Adjustable White	✓	✓	✓	✓	X
ZFS-10504-RGB	12V	10mm	RGB	✓	✓	✓	✓	X
ZFS-84000	24V	8mm	High Density	✓	✓	✓	✓	✓
ZFS-125000HD	24V	12mm	High Density	✓	✓	✓	✓	X
ZFS-104000	24V	10mm	High Output	✓	✓	✓	✓	X
ZFS-245000	24V	10mm	High Output	✓	✓	✓	✓	X

ALUMINUM LED CHANNEL KITS

ZFC-20BP-KIT - Domed Lens



W: 20mm H: 20mm L: 1 meter

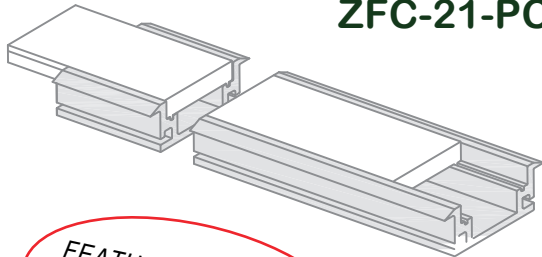
CONTENTS:

- 1 ZFC-20 Aluminum Channel (1 meter)
- 1 Milk White lens
- 1 Semi Clear lens
- 2 End Caps (1 with hole, 1 without)

*BOTTOM RAIL PROVIDES FOR INVISIBLE MOUNTING
NO MOUNTING CLIPS NEEDED*



ZFC-21-PC-KIT - Recessed Channel



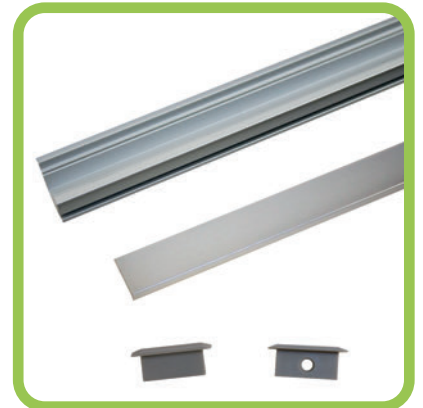
W: 27 mm H: 11 mm L: 1 meter

CONTENTS:

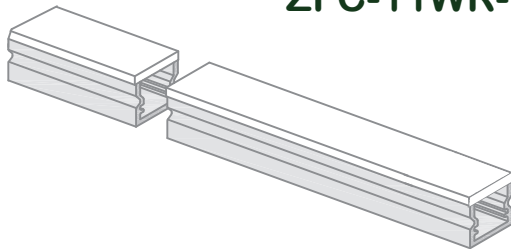
- 1 ZFC-21 Aluminum Channel (1 meter)
- 1 Frosted Lens
- 2 End Caps (1 with hole, 1 without)

*RECESSED LED CHANNEL DOES NOT REQUIRE
MOUNTING CLIPS*

*FEATURES HIGH-TEMP
POLYCARBONATE
LENSES*



ZFC-11WR-KIT - Narrow Channel



W: 11.7mm H: 12mm L: 1 meter

CONTENTS:

- 1 ZFC-11WR Plastic Channel (1 meter)
- 1 Frosted Lens
- 2 End Caps (1 with hole, 1 without)
- 4 Mounting Clips

