



Chipsmall Limited consists of a professional team with an average of over 10 year of expertise in the distribution of electronic components. Based in Hongkong, we have already established firm and mutual-benefit business relationships with customers from,Europe,America and south Asia,supplying obsolete and hard-to-find components to meet their specific needs.

With the principle of "Quality Parts,Customers Priority,Honest Operation,and Considerate Service",our business mainly focus on the distribution of electronic components. Line cards we deal with include Microchip,ALPS,ROHM,Xilinx,Pulse,ON,Everlight and Freescale. Main products comprise IC,Modules,Potentiometer,IC Socket,Relay,Connector.Our parts cover such applications as commercial,industrial, and automotives areas.

We are looking forward to setting up business relationship with you and hope to provide you with the best service and solution. Let us make a better world for our industry!



Contact us

Tel: +86-755-8981 8866 Fax: +86-755-8427 6832

Email & Skype: info@chipsmall.com Web: www.chipsmall.com

Address: A1208, Overseas Decoration Building, #122 Zhenhua RD., Futian, Shenzhen, China



HIGH DENSITY DOUBLE ROW LED FLEX RIBBON

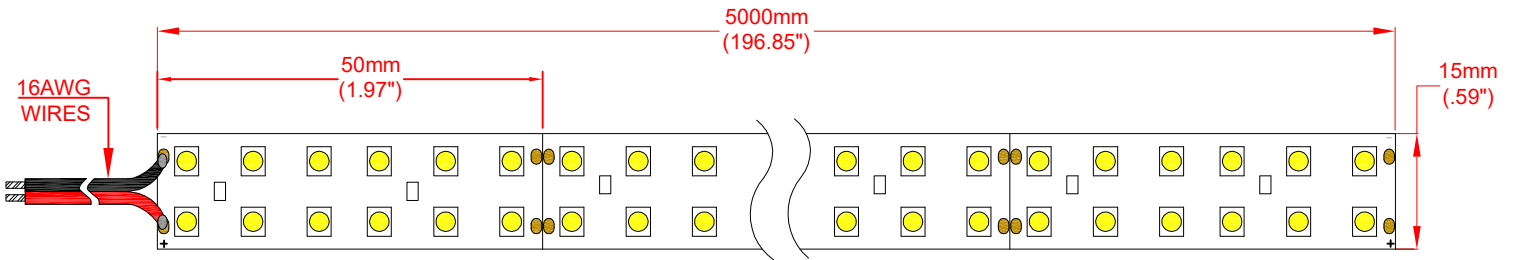
Features

VOLTAGE: 24V DC
 CURRENT: 3.4 Amps
 LED VIEWING ANGLE (2 θ 1/2): 120°

STANDARD PACKAGING:
 5 METER REEL (1200 LED'S)

OPTIONAL PACKAGING:
 INDIVIDUAL 500mm Sections (120 LED's)
 Order as ZFS-155000-24CW/SEC

NOTE: Individual sections ARE NOT supplied with insulated wire connection.



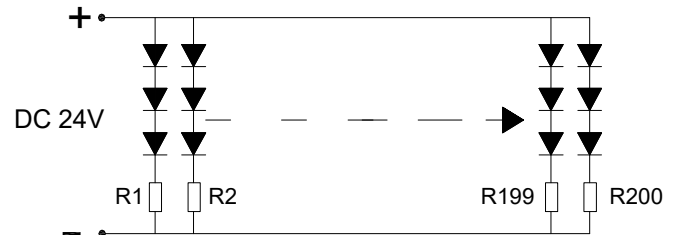
Absolute Maximum Rating at Ta = 25°C

Parameter	Symbol	Rating	Units
Forward Current	IF	3.4	A
Power Dissipation	PD	82	W
Electrostatic Discharge	ESD	800	V
Operating Temperature	Topr	-20~+50	°C
Storage Temperature	Tstg	-30~+80	°C

Accessories

ZPS-2435 24V, 35 Watt Power Supply
 ZPS-2460 24V, 60 Watt Power Supply
 ZDM-01 PWM LED Dimmer

Note: ZPS-2435 and ZPS-2460 require use of wire nuts for connections.



Electro-Optical Characteristics (Ta = 25°C)

JKL Part Number	Color	Number of LED's	Input Voltage (V DC)	Power (W)	Current (A)	Radiance Angle	CCT (K)	Lumen Flux (lm)
ZFS-155000-24CW	Cool White	1200	24	82	3.4	120°	5000°K	6925

Note

Please refer to JKL Application Sheet JKL-AS-ZFS-LED FLEX for Installation and Power Recommendations.



ATTENTION

OBSERVE PRECAUTION FOR HANDLING ELECTROSTATIC DISCHARGE SENSITIVE DEVICES

<p>THIRD ANGLE PROJECTION</p>			<p>METRIC DIMENSIONS ARE IN mm (INCHES)</p> <p>TOLERANCE UNLESS OTHERWISE SPECIFIED 1 PL +/- REF. 2 PL +/- REF. ANGLE +/-</p>		<h1>JKL COMPONENTS CORPORATION</h1>				
<p>DRAWN BY L. WENGSTROM</p>			<p>APP'VD BY L.R. DATE 1/8/17</p>		<p>SIZE A</p>	<p>FSCM NO. 55335</p>	<p>DRAWING NO. ZFS-155000-24CW</p>		
<p>RELEASED 1/8/17</p>			<p>- CAD DRAWING - MANUAL REVISIONS NOT PERMITTED</p>		<p>SCALE NONE</p>	<p>RELEASED DATE 1/8/17</p>	<p>REVISION DATE</p>	<p>SHEET 1 OF 1</p>	
<p>REV. NO.</p>	<p>DESCRIPTION/ECO NUMBER</p>	<p>APP'VD DATE</p>							