



Chipsmall Limited consists of a professional team with an average of over 10 year of expertise in the distribution of electronic components. Based in Hongkong, we have already established firm and mutual-benefit business relationships with customers from,Europe,America and south Asia,supplying obsolete and hard-to-find components to meet their specific needs.

With the principle of “Quality Parts,Customers Priority,Honest Operation,and Considerate Service”,our business mainly focus on the distribution of electronic components. Line cards we deal with include Microchip,ALPS,ROHM,Xilinx,Pulse,ON,Everlight and Freescale. Main products comprise IC,Modules,Potentiometer,IC Socket,Relay,Connector.Our parts cover such applications as commercial,industrial, and automotives areas.

We are looking forward to setting up business relationship with you and hope to provide you with the best service and solution. Let us make a better world for our industry!



Contact us

Tel: +86-755-8981 8866 Fax: +86-755-8427 6832

Email & Skype: info@chipsmall.com Web: www.chipsmall.com

Address: A1208, Overseas Decoration Building, #122 Zhenhua RD., Futian, Shenzhen, China



ZMX40M

DUAL MAGNETIC FIELD SENSOR

DESCRIPTION

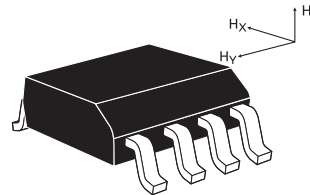
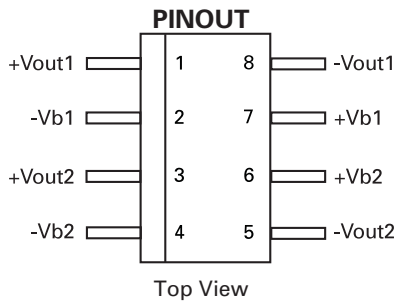
This device is a special tangential field difference sensor with two AMR (Anisotropic Magneto-Resistive) bridges for field movement measurements or field comparative measurements.

The ZMX40M contains two extremely sensitive magnetic sensor chips, mounted parallel to each other in an SM8 package, employing the magneto-resistive effect of thin film permalloy. It allows the measurement of magnetic fields or the detection of magnetic parts. The sensors each consist of a chip covered with thin film permalloy stripes which form a Wheatstone bridge, whose output voltage is proportional to the magnetic field component H_y . A field H_x , which is perpendicular to H_y , is necessary to suppress the hysteresis and to bias the sensors into the linear region. This field H_x is provided by an internal permanent magnet.

The chips are mounted in the package 3mm apart. If a magnet travels horizontally above the sensor, each chip will give an output which will peak as the magnet passes above it and the two peaks will be spatially separated by 3mm.

FEATURES

- Output voltage proportional to magnetic field H_y across each chip
- Both chips are in the same orientation and chip centres are 3mm apart in Y direction
- Magnetic fields vertical to the chip level H_z are not effective
- Disturbing fields H_x up to 30 kA/m are allowed
- Extremely small chip distance from the top side of package for accurate measurement
- Internal magnet each chip for creation of auxiliary field H_x



When the two peaks are the same amplitude, the magnet must be mid-way between the two chips. Therefore this double sensor can be used to measure position of, for example, a wheel tooth very accurately for automotive and machine-tool applications. With calibration to allow for the tolerances on the bridge outputs being slightly different, the ZMX40M has been used in machine tool applications to resolve distances down to 30 μ m. By comparing the two outputs and adding some hysteresis, a large-geometry magnetic tape reader (for example for a magnetic tape ruler) can be made. By combining both bridge outputs a current sensor can be also made by adding an external current loop over or under the ZMX40M. This loop is outside the package and therefore provides excellent galvanic isolation.

APPLICATIONS

- Linear position measurement for process control, door interlocks, proximity detectors and precision machine tools
- H-field movement measurement for a magnetic tape recognition
- High voltage isolated current measurement up to many amps range by using a suitable current loop over or under the IC
- Detection of rotating magnets in the presence of a disturbing field by comparisons of maximum values of individual sensors

DEVICE MARKING

- ZMX40M

CONNECTION DIAGRAM

AMR chip 1: supply voltage between +Vb1 and -Vb1
output voltage of bridge between +Vout1 and -Vout1

AMR chip 2: supply voltage between +Vb2 and -Vb2
output voltage of bridge between +Vout2 and -Vout2

ZMX40M

ABSOLUTE MAXIMUM RATINGS

PARAMETER	SYMBOL	LIMIT	UNIT
Supply voltage for each sensor chip (1,2)	V_B	12	V
Total power dissipation	P_{TOT}	240	mW
Operating temperature range	T_{amb}	-25 to +125	°C
Storage temperature range	T_{stg}	-25 to +125	°C

ELECTRICAL CHARACTERISTICS (at $T_{amb}=25^{\circ}\text{C}$ and $H_X=3\text{ kA/m}$ unless otherwise stated)

PARAMETER	SYMBOL	MIN	TYP	MAX	UNIT	TEST CONDITIONS
Bridge resistance	R_{br}	1.4	-	2.2	$k\Omega$	
Output voltage range	V_O/V_B	12	-	24	mV/V	
Open circuit sensitivity	S	3.0	-	5.0	(mV/V)/ (kA/m)	$V_B=\text{const.}$
Hysteresis of output voltage	V_{OH}/V_B	-	-	50	$\mu\text{V/V}$	
Offset voltage	V_{off}/V_B	-1.5	-	+1.5	mV/V	
Operating frequency	f_{max}	0	-	1	MHz	
Temp. coeff. of offset voltage	TCV_{off}	-3	-	+3	($\mu\text{V/V}$)/K	$T_{amb} = -25$ to $+125^{\circ}\text{C}$
Temp. coeff. of bridge resistance	TCR_{br}	+0.25	+0.3	+0.35	%/K	$T_{amb} = -25$ to $+125^{\circ}\text{C}$
Temp. coeff. of open circuit sensitivity $V_B=5\text{V}$	TCS_V	-0.25	-0.3	-0.35	%/K	$T_{amb} = -25$ to $+125^{\circ}\text{C}$
Temp. coeff. of open circuit sensitivity $I_B=3\text{mA}$	TCS_I	-	-0.1	-	%/K	$T_{amb} = -25$ to $+125^{\circ}\text{C}$

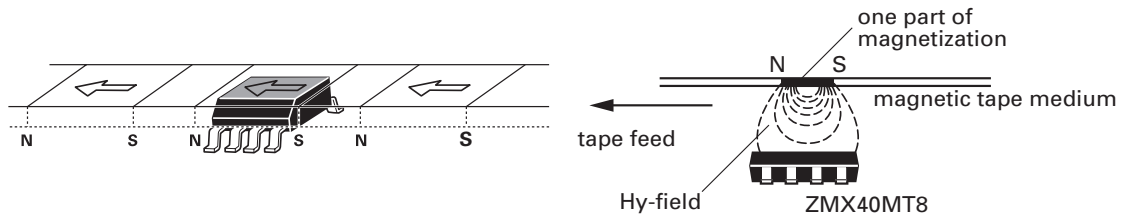
ORDERING INFORMATION

DEVICE	REEL SIZE	TAPE WIDTH	QUANTITY PER REEL
ZMX40MT8TA	7"	12mm	1000 units
ZMX40MT8TC	13"	12mm	4000 units

ZMX40M

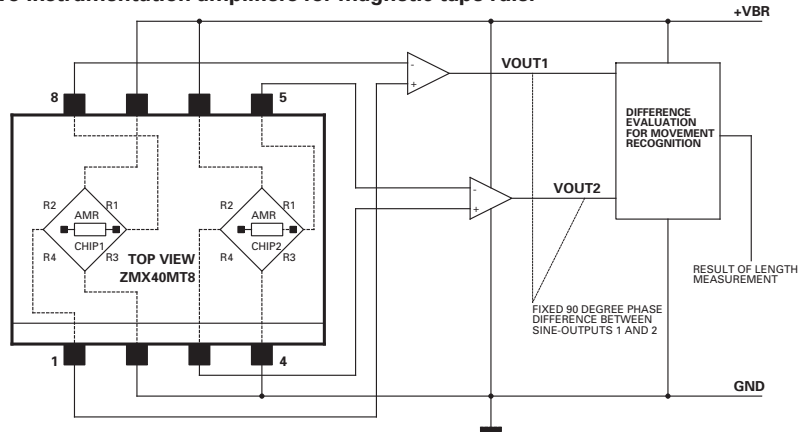
TYPICAL APPLICATIONS

Magnetic tape scanning (field movement measurement for magnetic tape ruler):

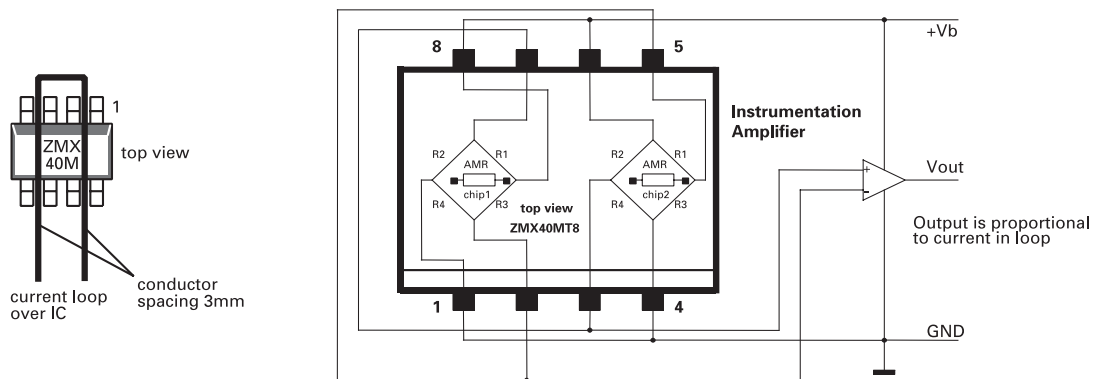


The changing voltage peaks in both AMR bridges are used for the tape movement measurement.

ZMX40M plus two instrumentation amplifiers for magnetic tape ruler



Current sensor (by combining both bridge outputs and a high isolation voltage)



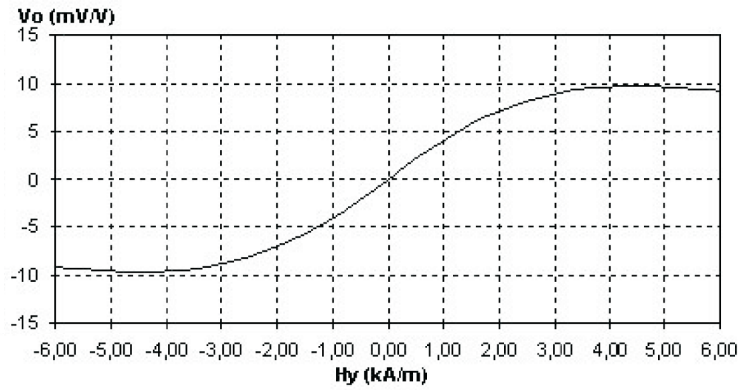
This double chip solution with the current loop conductor guarantees good rejection of external fields and a high isolation voltage.

ZMX40M

Sensor output characteristic

ZMX40M

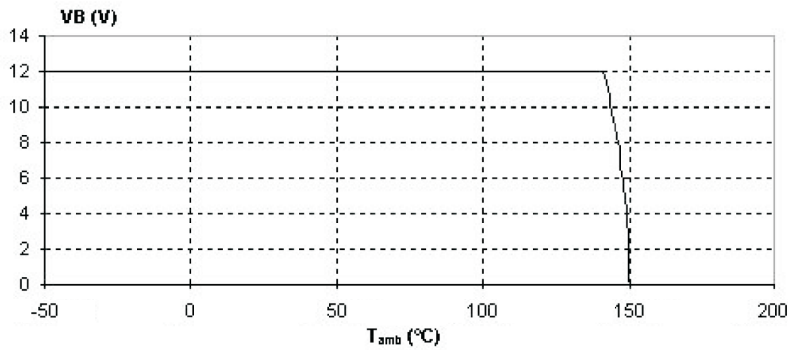
$$V_o = f(H_y) \text{ typ.}$$



Supply voltage (maximum) derating curve

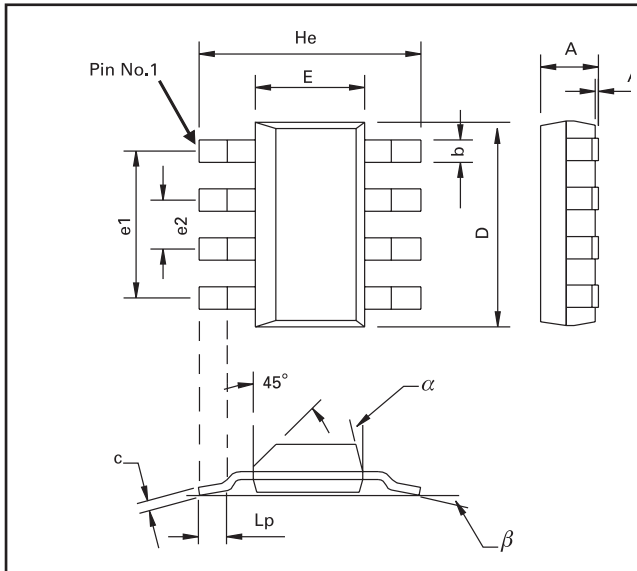
ZMX40M

$$V_{bmax} = f(T_{amb})$$



ZMX40M

PACKAGE OUTLINE



PACKAGE DIMENSIONS

DIM	Millimeters			Inches			DIM	Millimeters			Inches		
	Min	Max	Typ.	Min	Max	Typ.		Min	Max	Typ.	Min	Max	Typ.
A	-	1.7	-	-	0.067	-	e1	-	-	4.59	-	-	0.1807
A1	0.02	0.1	-	0.008	0.004	-	e2	-	-	1.53	-	-	0.0602
b	-	-	0.7	-	-	0.0275	He	6.7	7.3	-	0.264	0.287	-
c	0.24	0.32	-	0.009	0.013	-	Lp	0.9	-	-	0.035	-	-
D	6.3	6.7	-	0.248	0.264	-	alpha	-	15°	-	-	15°	-

© Zetex plc 2004

Europe	Americas	Asia Pacific	Corporate Headquarters
Zetex GmbH Streitfeldstraße 19 D-81673 München Germany	Zetex Inc 700 Veterans Memorial Hwy Hauppauge, NY 11788 USA	Zetex (Asia) Ltd 3701-04 Metroplaza Tower 1 Hing Fong Road, Kwai Fong Hong Kong	Zetex plc Fields New Road, Chadderton Oldham, OL9 8NP United Kingdom
Telephone: (49) 89 45 49 49 0 Fax: (49) 89 45 49 49 49 europe.sales@zetex.com	Telephone: (1) 631 360 2222 Fax: (1) 631 360 8222 usa.sales@zetex.com	Telephone: (852) 26100 611 Fax: (852) 24250 494 asia.sales@zetex.com	Telephone (44) 161 622 4444 Fax: (44) 161 622 4446 hq@zetex.com

These offices are supported by agents and distributors in major countries world-wide.

This publication is issued to provide outline information only which (unless agreed by the Company in writing) may not be used, applied or reproduced for any purpose or form part of any order or contract or be regarded as a representation relating to the products or services concerned. The Company reserves the right to alter without notice the specification, design, price or conditions of supply of any product or service.

For the latest product information, log on to www.zetex.com

ISSUE 1 - MARCH 2004