



Chipsmall Limited consists of a professional team with an average of over 10 year of expertise in the distribution of electronic components. Based in Hongkong, we have already established firm and mutual-benefit business relationships with customers from,Europe,America and south Asia,supplying obsolete and hard-to-find components to meet their specific needs.

With the principle of “Quality Parts,Customers Priority,Honest Operation,and Considerate Service”,our business mainly focus on the distribution of electronic components. Line cards we deal with include Microchip,ALPS,ROHM,Xilinx,Pulse,ON,Everlight and Freescale. Main products comprise IC,Modules,Potentiometer,IC Socket,Relay,Connector.Our parts cover such applications as commercial,industrial, and automotives areas.

We are looking forward to setting up business relationship with you and hope to provide you with the best service and solution. Let us make a better world for our industry!



Contact us

Tel: +86-755-8981 8866 Fax: +86-755-8427 6832

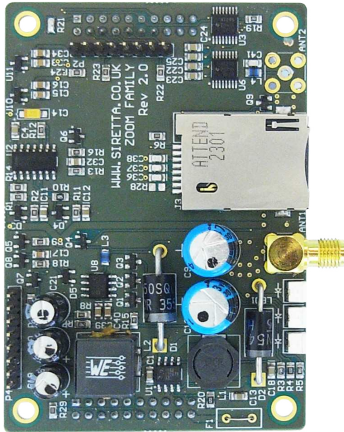
Email & Skype: info@chipsmall.com Web: www.chipsmall.com

Address: A1208, Overseas Decoration Building, #122 Zhenhua RD., Futian, Shenzhen, China



ZOOM-N-UMTS

UMTS Socket Modem without GPS



Key Features

- Penta band UMTS
- GPRS class 10
- AT command driven
- Embedded TCP/IP stack
- Python script interpreter
- 5 - 42V DC supply
- RoHS compliant
- Extended temperature range
- Extended RF sensitivity

Additional Features

- » SIM phonebook
- » Fixed dialling number (FDN)
- » Real-time clock
- » Network LED support
- » IRA character set
- » Jamming detection and report
- » Embedded TCP / IP stack, including TCP, ICP, UDP, SMTP and FTP protocols
- » TMFS (Telit Firmware Management Services) Over the air update
- » 3x LED for status indication
- » 1 A/D converter

General Description

The ZOOM-N-UMTS is supplied as standard with a global UMTS and quad band GSM/GPRS module. The 'ZOOM-N-UMTS' has been designed for simple integration into both new and existing designs and is intended to be a cost effective, fully tested alternative to a standalone bare module.

The ZOOM-N-UMTS can be integrated into your application to enable cellular communication quickly, with little effort and no formal testing required on your part until you go to production.

The ZOOM-N-UMTS provides a full set of interfaces through the 2 x 20 way IDE connectors. These headers are split into 2 categories, a function header and a communication header.

The function header includes access to the modules onboard GPIO connections and LED indicators and includes protection against over voltage.

The communication header provides access to all of the serial channels available on the module including USB / standard RS232 interface and the debug RS232 port. Both headers provide power connections and on/off controls.

Rev 1.7

ZOOM-N-UMTS

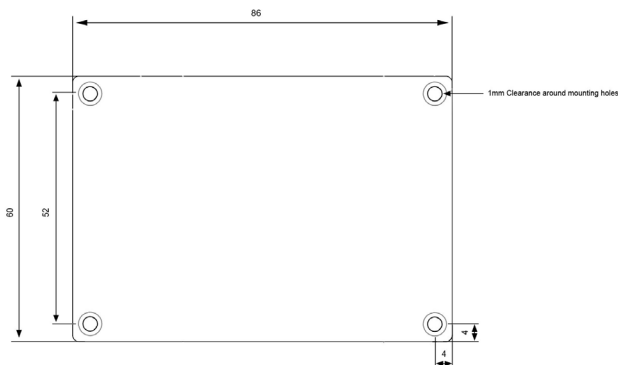
UMTS Socket Modem without GPS

Specifications - Electrical

Operating temperature range:	-30 to 85°C
Antenna impedance:	50 ohm
Operating frequencies:	2G: 850, 900, 1800, 1900MHz 3G: 800/850, AWS 1700, 1900, 2100MHz
Power:	5 - 42V
Output power:	Class 4 (2W) @ 850, 900MHz Class 1 (1W) @ 1800, 1900MHz
Supply voltage range:	5 - 42V DC
Sensitivity:	107dBm (typ.) @ 850, 900MHz 106 dBm (typ.) @ 1800, 1900MHz

Specifications - Mechanical

Dimensions:	85mm x 60mm x 24mm
Weight:	54g
Antenna connector:	SMA female connector



Interfaces:

- » Sim card holder: 1.8V / 3V interface
- » 2 x IDE 20-way connectors

GPRS Data:

- » GPRS class 10
- » Mobile station class B
- » Coding scheme 1 to 4

SMS:

- » Point-to-point mobile originated and mobile terminated SMS
- » Concatenated SMS supported

Data Supplementary:

- » Call forwarding
- » Call barring
- » Call waiting and call hold
- » Advice of charge
- » Calling line identification presentation (CLIP)
- » Calling line identification restriction (CLIR)
- » Unstructured supplementary services mobile data (USSD)

Data Supplementary:

- » HSPA category 6 in uplink and 10 in downlink
- » Downlink up to 14.4Mbps
- » Uplink up to 5.76Mbps
- » UMTS downlink/uplink to to 384Kbps
- » EDGE
- » Downlink up to 296Kbps
- » Uplink up to 236.8Kbps
- » GPRS
- » CSD

Please contact your Siretta representative for ordering information