



Chipsmall Limited consists of a professional team with an average of over 10 year of expertise in the distribution of electronic components. Based in Hongkong, we have already established firm and mutual-benefit business relationships with customers from,Europe,America and south Asia,supplying obsolete and hard-to-find components to meet their specific needs.

With the principle of “Quality Parts,Customers Priority,Honest Operation,and Considerate Service”,our business mainly focus on the distribution of electronic components. Line cards we deal with include Microchip,ALPS,ROHM,Xilinx,Pulse,ON,Everlight and Freescale. Main products comprise IC,Modules,Potentiometer,IC Socket,Relay,Connector.Our parts cover such applications as commercial,industrial, and automotives areas.

We are looking forward to setting up business relationship with you and hope to provide you with the best service and solution. Let us make a better world for our industry!



Contact us

Tel: +86-755-8981 8866 Fax: +86-755-8427 6832

Email & Skype: info@chipsmall.com Web: www.chipsmall.com

Address: A1208, Overseas Decoration Building, #122 Zhenhua RD., Futian, Shenzhen, China

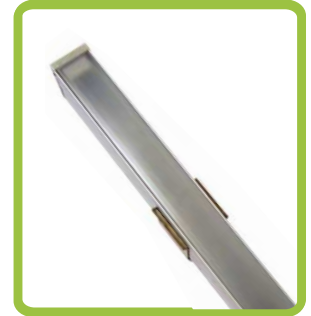


ALUMILINE[®] CHANNEL RAILS

ZFC- series

Wide Variety of Profile Shapes & Diffuser Lenses:

ZFC-11WR-MULTI ZFC-20BP-MULTI
 ZRC-17-PC-MULTI ZFC-21-MULTI
 ZFC-18C-PC-MULTI



ZFC-17 SERIES
Milk White Lens



ZFC-17 SERIES
Semi-Clear Lens



ZFC-17 SERIES - SIDE VIEW



ZFC-18C SERIES - CORNER MOUNT



ZFC-18C END CAPS

APPLICATIONS

- CABINETS
- VANITY MIRROR
- DISPLAY CASE
- STAIRWAYS & RAILINGS
- WINE RACKS
- CLOSETS
- RETAIL SPACE
- BOOKSHELVES
- KICKBOARDS
- WORK BENCHES

The JKL Alumiline[®] Channel Rails can be used anywhere a continuous band of light would be wanted without the appearance of hotspots. The JKL Alumiline[®] Channel Rails add a professional look to the application of LED lighting with different types of diffusers and lens covers.

Lighting hand rails, closets, stairs, tables and undercabinets can be completed quickly with a refined appearance using the Alumiline[®] Channel Rails. A variety of lengths are available and JKL Components also offers custom lengths to meet your project needs.



ROHS COMPLIANT
ISO9001 CERTIFIED

WWW.JKLLAMPS.COM
 SALES@JKLLAMPS.COM
 800-421-7244

Quality Lighting Solutions
JKL[®]
COMPONENTS CORPORATION
 Since 1972

ZFC- SERIES

ASSEMBLY

- 1) Clean the inside surface of rail to remove any grease or dirt.
- 2) Peel protective paper off of the flex ribbon. Make sure you remove the paper but not the double-sided adhesive.
- 3) Place the start of the flex ribbon 1/4 inch (6 mm) away from the inside edge of the Alumiline[®] rail. Additional space may be needed to accommodate your connection method (wires or solderless connectors).
- 4) Slowly peel the paper off the ribbon and press the ribbon into the inside surface of the rail.
- 5) With the flex ribbon attached to the rail, place the end caps onto the ends of the rail. The end cap with the hole should be placed where the wires will come out.
- 6) The diffused/lens cover can be snapped onto the rail by catching one side of the lens cover on the rail and pushing down-and-in towards the rail on the other side.

STEP 2



STEP 3 + 4



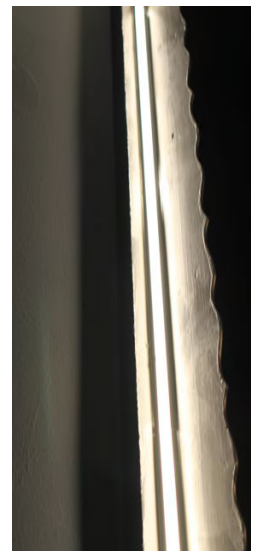
STEP 5 + 6



MOUNTING

HOW TO MOUNT

- 7) Mark the location of where the Alumiline[®] rail with flex LED will be mounted, making sure there is enough space for wiring and that the wires are long enough to reach the next component.
- 8) Mark two spots 1/3 of the way in from each rail end. Using a number 6 screw, anchor a mounting clip at each spot.
- 9) Snap the Alumiline[®] rail (with your LED ribbon mounted inside) into the clips. Center the rail on the clips and proceed with the electrical connections.



CONNECTING UP THE POWER SUPPLIES, DIMMERS AND CONTROLS

Power up the ribbons as needed.

See [JKL-AS-ZFS-LED-FLEX.pdf](#) for more specific information on the use of LED flex ribbons, connectors, joiner cables and electrical connection tips.