



Chipsmall Limited consists of a professional team with an average of over 10 year of expertise in the distribution of electronic components. Based in Hongkong, we have already established firm and mutual-benefit business relationships with customers from,Europe,America and south Asia,supplying obsolete and hard-to-find components to meet their specific needs.

With the principle of "Quality Parts,Customers Priority,Honest Operation,and Considerate Service",our business mainly focus on the distribution of electronic components. Line cards we deal with include Microchip,ALPS,ROHM,Xilinx,Pulse,ON,Everlight and Freescale. Main products comprise IC,Modules,Potentiometer,IC Socket,Relay,Connector.Our parts cover such applications as commercial,industrial, and automotives areas.

We are looking forward to setting up business relationship with you and hope to provide you with the best service and solution. Let us make a better world for our industry!



## Contact us

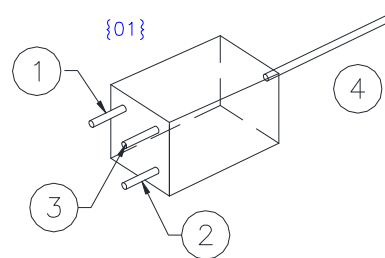
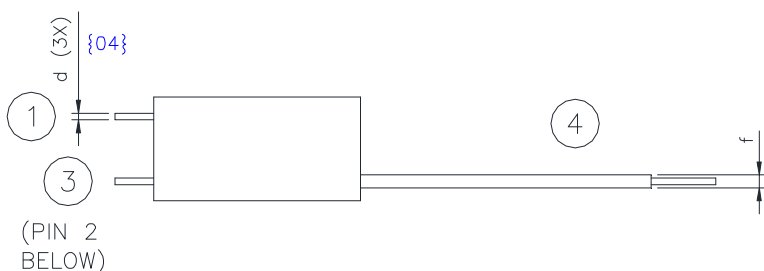
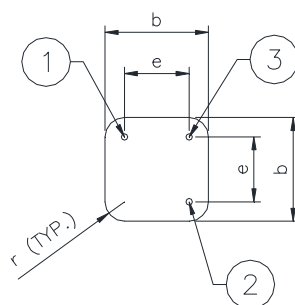
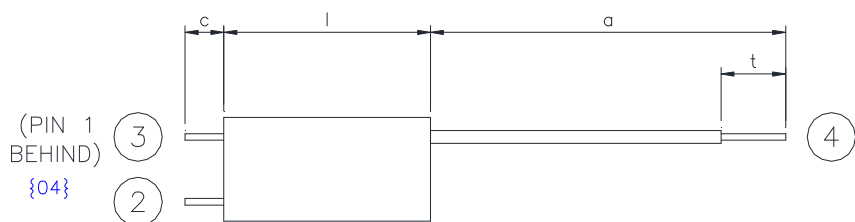
Tel: +86-755-8981 8866 Fax: +86-755-8427 6832

Email & Skype: info@chipsmall.com Web: www.chipsmall.com

Address: A1208, Overseas Decoration Building, #122 Zhenhua RD., Futian, Shenzhen, China



**MECHANICAL DATA**



e	: 5.0 ± 0.5
l	: 16 ± 0.5
d	: Ø0.5
r	: R1.5


a	: 50.0 ± 5
b	: 8.0 ± 0.3
c	: 3.0 min.
f	: Ø1.0
t	: 5.0 ± 2

Pin 1 Primary  
Pin 3 Secondary

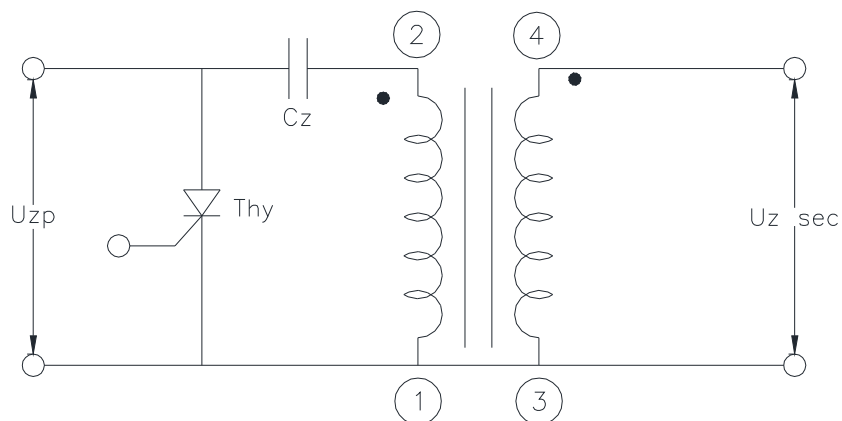
Pin 2 Primary  
Pin 4 Secondary High Voltage

**Remarks**

- Operating temperature : -30°C to +80°C
- {03}
- All solder materials are to be leadfree.
- RoHS compliance {01}

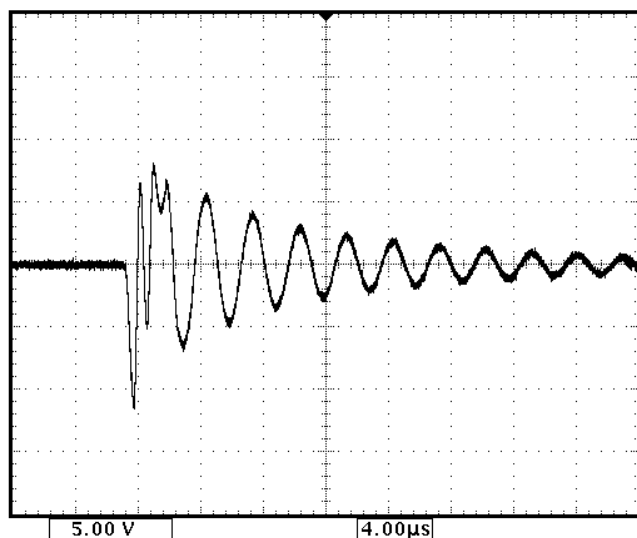
				NAME	DATE	DEPARTMENT	 <p>8 TRACTOR ROAD SINGAPORE 627969</p>	
				DRAWN	MICHAEL LI	06.01.2011		COE
				CHECKED	MICHAEL LI	06.01.2011		COE
04	-1&2/04X3	25.07.14	MAUNG TT	<b>ZS 1052-1(H)</b>				PAGE 1 OF 2
03	-1,2&3/03x4	04.04.13	MAUNG TT					
02	-3/02X1	21.07.10	LMICHAEL					
01	-1&2/01X1	09.01.12	LMICHAEL					
REV	CHANGE	DATE	NAME					

**OPERATING DATA**




Item	Primary	Secondary
Resistance	325 mohm max.	150 ± 15 ohm
Primary Voltage, Uz <sub>p</sub>	300 V	--
Primary Capacitance, Cz	0.047 µF	--
Secondary Voltage, Uz <sub>sec</sub>	--	9.5 kV min
Polarity of 1 <sup>st</sup> peak	--	1 <sup>st</sup> peak negative
Inductance @ 1 kHz	20 ± 4 µH	20 ± 5 mH

Typical Waveform:



Unloaded high voltage output  
4 µs/div 5kV/div

	NAME	DATE	DEPARTMENT	 <p><b>EXCELITAS</b> TECHNOLOGIES {03}</p> <p>8 TRACTOR ROAD SINGAPORE 627969</p>
DRAWN	MICHAEL LI	06.01.2011	COE	
CHECKED	MICHAEL LI	06.01.2011	COE	
DRAWN				
<b>ZS 1052-1(H) {04}</b>				PAGE 2 OF 2