



Chipsmall Limited consists of a professional team with an average of over 10 year of expertise in the distribution of electronic components. Based in Hongkong, we have already established firm and mutual-benefit business relationships with customers from,Europe,America and south Asia,supplying obsolete and hard-to-find components to meet their specific needs.

With the principle of “Quality Parts,Customers Priority,Honest Operation,and Considerate Service”,our business mainly focus on the distribution of electronic components. Line cards we deal with include Microchip,ALPS,ROHM,Xilinx,Pulse,ON,Everlight and Freescale. Main products comprise IC,Modules,Potentiometer,IC Socket,Relay,Connector.Our parts cover such applications as commercial,industrial, and automotives areas.

We are looking forward to setting up business relationship with you and hope to provide you with the best service and solution. Let us make a better world for our industry!



## Contact us

Tel: +86-755-8981 8866 Fax: +86-755-8427 6832

Email & Skype: info@chipsmall.com Web: www.chipsmall.com

Address: A1208, Overseas Decoration Building, #122 Zhenhua RD., Futian, Shenzhen, China





# Z8 Encore! XP<sup>®</sup> F08xA Series

## Development Kit

8-Pin Development Kit

20, 28-Pin Development Kit



## OVERVIEW

Evaluate. Design. Build. That's the simple power behind the value of the ZiLOG Z8 Encore! XP<sup>®</sup> F08xA Series Development Kit. Our complete development platform includes all the hardware and software you need to cut design time and get your products to market faster.

These new kits feature the Z8 Encore! XP<sup>®</sup> F08xA series MCU, with new features such as a full range temperature sensor and a transimpedance amplifier, which have their outputs processed by an enhanced sigma-delta analog-to-digital converter. The Z8 Encore! XP<sup>®</sup> F08xA series MCU is perfect for a wide range of consumer and industrial applications.

Use the Z8 Encore! XP<sup>®</sup> F08xA Series Development Kits both to evaluate our new MCU and create your Z8 Encore! XP<sup>®</sup> F08xA series MCU product solution. You get everything you need to go from concept to design - there's nothing else to buy. Discover the value and power ZiLOG brings to your next 8-bit MCU design. Order a Z8 Encore! XP<sup>®</sup> F08xA Series Development Kit today!

## Z8 Encore! XP<sup>®</sup> F08xA Series MCU Development Kit Contents

### Hardware

- Z8 Encore! XP<sup>®</sup> F08xA Series Development Board
- Serial or USB Smart Cable
- 5 V DC Universal Power Supply

### Software

- ZDS II Integrated Development Environment (IDE)
- ANSI C-Compiler
- Sample Code

### Documentation/CD-ROM

- Development Kit Quick Start Guide
- Development Kit User Manual
- ZDS II - IDE User Manual
- eZ8 CPU User Manual
- Product Specifications
- Product Briefs
- Application Notes

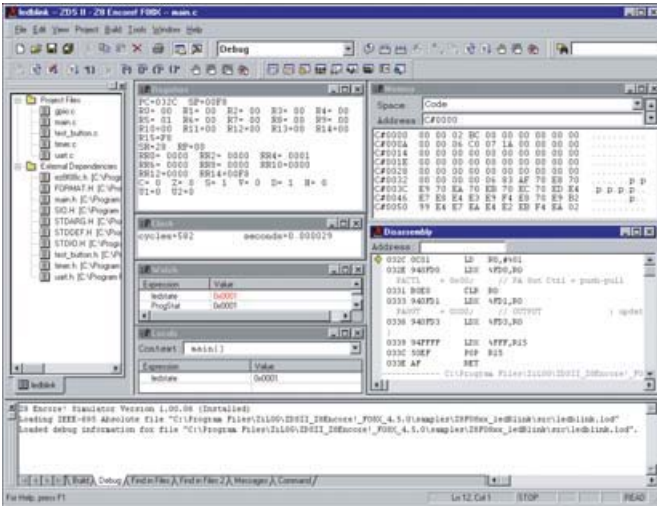
### Development Board Features

- Z8 Encore! XP<sup>®</sup> F08xA MCU
- Three LEDs
- RS-232 interface
- IrDA transceiver
- Two Push Buttons, RESET and TEST
- 5 V DC power connector
- On-chip debugger interface
- Header for ADC input (not present on 8-pin board)
- Prototyping area
- External interface connectors
- 2.7 to 3.6 V operating range with 5 V tolerant inputs





# Z8 Encore! XP<sup>®</sup> F08xA Series Development Kit



## Z8 Encore!<sup>®</sup> MCU ZDS II IDE GUI

ZiLOG Developer Studio II Integrated Development Environment is a complete suite of software tools that supports development with the Z8 Encore! XP<sup>®</sup> MCU. Its easy-to-use Windows-based GUI provides an environment that accelerates the edit, compile, and debug cycle. Included in ZDS II are a language sensitive editor, project manager, compiler, assembler, linker, librarian, and debugger.

## C-Compiler

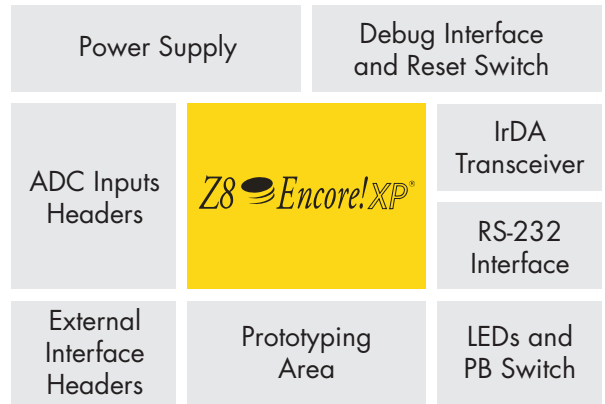
A full version ANSI C-Compiler is included in this kit at no additional cost allowing you to begin your design immediately. The C-Compiler supports a powerful configurable optimizer allowing code to be optimized for speed or size.

## Smart Cable

This small circuit board provides reliable and robust communication between your desktop PC and the development board. Use it for your development board and again with your final product's hardware.

**Serial Smart Cable** converts RS-232 signals to communicate with the on-chip debugger of the eZ8 core.  
P/N: Z8ENCORE000ZAC

**USB Smart Cable** is compatible with both USB highspeed and full-speed standards and converts the signals sent from the USB port on your development PC to communicate with the on-chip debugger.  
P/N: ZUSBSC00100ZAC  
P/N: ZUSBSC00100ZACG (RoHS)  
P/N: ZUSBOPTSC01ZACG (RoHS)



Device	Memory Flash (Bytes)	SRAM (Bytes)	Speed (MHz)	I/O Lines	16-Bit Timers	10-Bit A/D Channels	UART	Comparator	Other Features	Operating Voltage	Temp. Range (°C)	Pin Count	Development Kit
Z8F081A	8K	1K	20	23	2	-	1	1	Int. Prec. Oscillator	2.7 - 3.6 V	-40° to 105°	8, 28, 20	Z8F04A08100KITG (RoHS) Z8F08A28100KITG (RoHS)
Z8F082A	8K	1K	20	25	2	8	1	1	Temp. Sensor, Int Prec. Oscillator	2.7 - 3.6 V	-40° to 125°	28, 20, 8	Z8F04A08100KITG (RoHS) Z8F08A28100KITG (RoHS)

Order your ZiLOG Development Kits at <http://www.zilog.com> to get your applications to market in record time.

Z8 Encore! XP<sup>®</sup> is a registered trademarks of ZiLOG, Inc. in the United States and in the other countries. FLO07503-1206

