



Chipsmall Limited consists of a professional team with an average of over 10 year of expertise in the distribution of electronic components. Based in Hongkong, we have already established firm and mutual-benefit business relationships with customers from,Europe,America and south Asia,supplying obsolete and hard-to-find components to meet their specific needs.

With the principle of “Quality Parts,Customers Priority,Honest Operation,and Considerate Service”,our business mainly focus on the distribution of electronic components. Line cards we deal with include Microchip,ALPS,ROHM,Xilinx,Pulse,ON,Everlight and Freescale. Main products comprise IC,Modules,Potentiometer,IC Socket,Relay,Connector.Our parts cover such applications as commercial,industrial, and automotives areas.

We are looking forward to setting up business relationship with you and hope to provide you with the best service and solution. Let us make a better world for our industry!



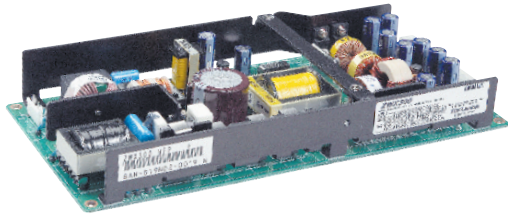
Contact us

Tel: +86-755-8981 8866 Fax: +86-755-8427 6832

Email & Skype: info@chipsmall.com Web: www.chipsmall.com

Address: A1208, Overseas Decoration Building, #122 Zhenhua RD., Futian, Shenzhen, China





- 90 - 150W Convection Cooled Ratings
- 1U High
- ATX SFX 12V Compatible
- Power Factor Corrected
- Peak Power Ratings
- No Minimum Loading Required

Key Market Segments & Applications

Industrial & Rack Mount

PC Applications

ZWX Series

180W to 300W

Industrial ATX Power Supplies

ZWX Features and Benefits

Features

- Convection Cooled Ratings
- Low Profile
- Industrial Grade
- No minimum loading

Benefits

- No Forced Air or Fan Needed
- Fits into 1U High Enclosures
- Greater Reliability & Field Life
- Easier to Use

Specifications

MODELS			ZWX180	ZWX240	ZWX300
ITEMS					
Input Voltage		V	85-265VAC (47-63Hz)		
Input Current	(1)(2)	A	1.9 / 1.0	2.6 / 1.3	3.2 / 1.6
Inrush Current	(2)	A	14 / 28 Cold start 25°C ambient		
Power Factor		-	Meets EN61000-3-2		
Leakage Current		mA	< 0.75		
Overcurrent Protection	(3)	-	>1.05% of forced air current rating (5s delay and manual reset on V1, 2 & 3)		
Overvoltage Protection	(4)	V	+3.3V: 3.76 - 4.3V, +5V: 5.74 - 7V, +12V: 13.4 - 15.6V		
Hold Up Time (Typ)	(1)	ms	20ms at 100VAC		
Efficiency	(1)(2)	%	81 / 84		
Remote On/Off		-	High: Unit off, Low: Unit On (enabled). Meets SFX12V		
DC Good PWR_OK		-	High: Power supply is good. Meets SFX12V		
Remote Sense		-	+3.3V Only		
Output Voltage Setpoint Accuracy		-	±5% (all outputs)		
Output Voltage Adjustment		-	None		
Line Regulation		mV	3.3V: 20mV, 5V: 48mV, +12V: 48mV, -12V: 20mV, +5Vsb: 20mV		
Load Regulation		mV	3.3V: 100mV, 5V: 300mV, +12V: 300mV, -12V: 100mV, +5Vsb: 100mV		
Ripple & Noise		mV	3.3V: 120mV, 5V: 150mV, +12V: 150mV, -12V: 120mV, +5Vsb: 120mV		
Operating Temperature		°C	-10 to +70, derate linearly to 20% load from 50 to 70		
Storage Temperature		°C	-30 to +85°C		
Humidity (non condensing)		%RH	Operating: 30 - 90, Non operating: 10 - 95		
Cooling		-	Convection or forced air cooled (30CFM, 0.85m3/min)		
Withstand Voltage		-	I/P to Gnd 2kVAC (20mA), I/P to O/P 3kVAC (20mA), O/P to Gnd 500VAC (100mA) for 1 min.		
Isolation Resistance		-	>100Ω at 25°C & 70%RH, Output to Ground 500VDC		
Vibration (non operating)		-	10 - 55Hz (1 minute sweep), 19.6m/s2 constant X, Y, Z 1 hour		
Shock (non operating)		m/s ²	< 392		
Safety Agency Approvals		-	UL60950-1, CSA60950-1, EN60950-1, EN50178 (OV II), CE Mark		
Conducted & Radiated EMI		-	EN55011/EN55022-B, FCC Class B, VCCI-B		
Immunity		-	EN61000-4-2, -3, -4, -5, -6, -8, -11		
Weight (Typ)		g	500	650	800
Size (WxHxD)		mm	94 X 36 X 210	106 X 36 X 225	118 X 36 X 250
Warranty		yrs	3 Years		

Model Selector		Output Voltage	Max Curr. (Convection)	Max Power (Convection)	Max Curr (Forced Air)	Max Power (Forced Air)	Peak Curr. (4) (Forced Air)	Peak Power (4) (Forced Air)
ZWX180	V1	+3.3V	6A(5)		8.4A(5)		12A(5)	
	V2	+5V	5A(5)		7A(5)		10A(5)	
	V3	+12V	6A	90W	9A	153W	13A	180W
	V4	-12V	0.2A		0.3A		0.3A	
	V5	+5V (sb)	1.4A		2A		2A	
ZWX240	V1	+3.3V	7A		9.8A		14A	
	V2	+5V	6A		8.4A		12A	
	V3	+12V	8A	120W	11.2A	204W	16A	240W
	V4	-12V	0.2A		0.3A		0.3A	
	V5	+5V (sb)	1.4A		2A		2A	
ZWX300	V1	+3.3V	10A		14A		20A	
	V2	+5V	6A		8.4A		12A	
	V3-1	+12V	4A(6)	150W	5.6A	255W	8A(7)	300W
	V3-2	+12V	8A(6)		11.2A		16A(7)	
	V4	-12V	0.2A		0.4A		0.4A	
	V5	+5V (sb)	1.4A		2A		2A	

Suffix	Description
Blank	Open frame
/L1	L Bracket - input on the left side (rear mounting side facing away)
/L2	L Bracket - input on the right side (rear mounting side facing away)
/A1	L Bracket & Cover - input on the left side (rear mounting side facing away)
/A2	L Bracket & Cover - input on the right side (rear mounting side facing away)

NOTES: Specification Table Page 1

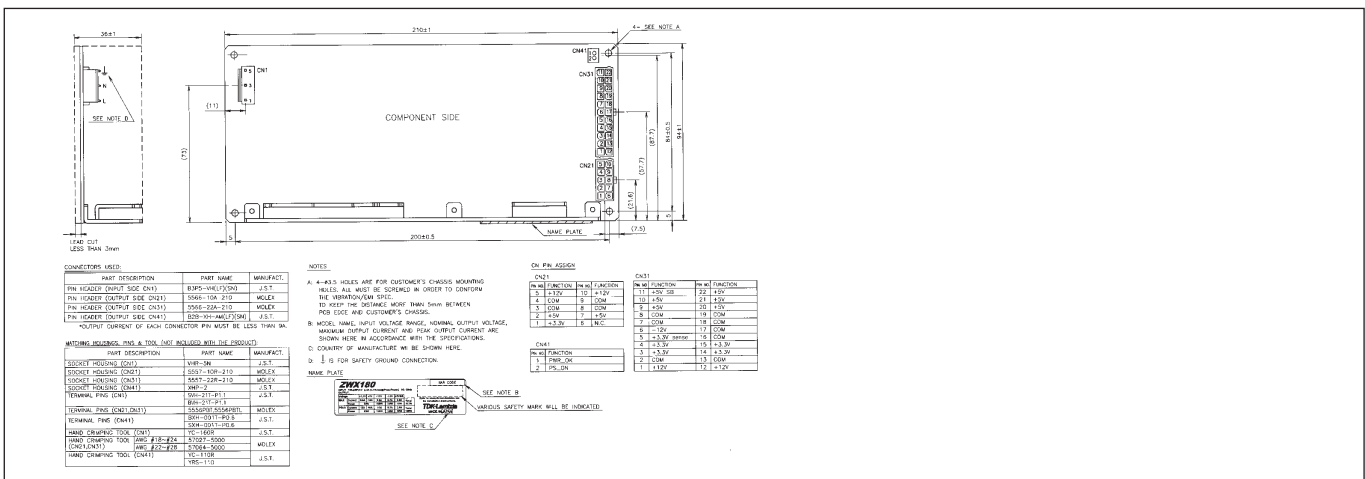
- With output loading of:
ZWX180: V1=6.5A, V2=6.5A, V3=7.7A, V4=0.2A, V5=1A
ZWX240: V1=8.9A, V2=7.7A, V3=10.2A, V4=0.3A, V5=2A
ZWX300: V1=12A, V2=7A, V3-1=5A, V3-2=9.4A, V4=0.2A, V5=1A
- 100/200VAC
- Avoid prolonged operation in overload
- <5s operation at peak load

Connector	Harness	ZWX180	ZWX240	ZWX300
CN1	HA-2-IN	Y	Y	Y
CN21	ZWX-HA-04	Y	Y	Y
CN21(S-ATA)	ZWX-HA-02	Y	Y	Y
CN31/CN41	ZWX-HA-01	Y	Y	Y
CN51	ZWX-HA-03	-	-	Y

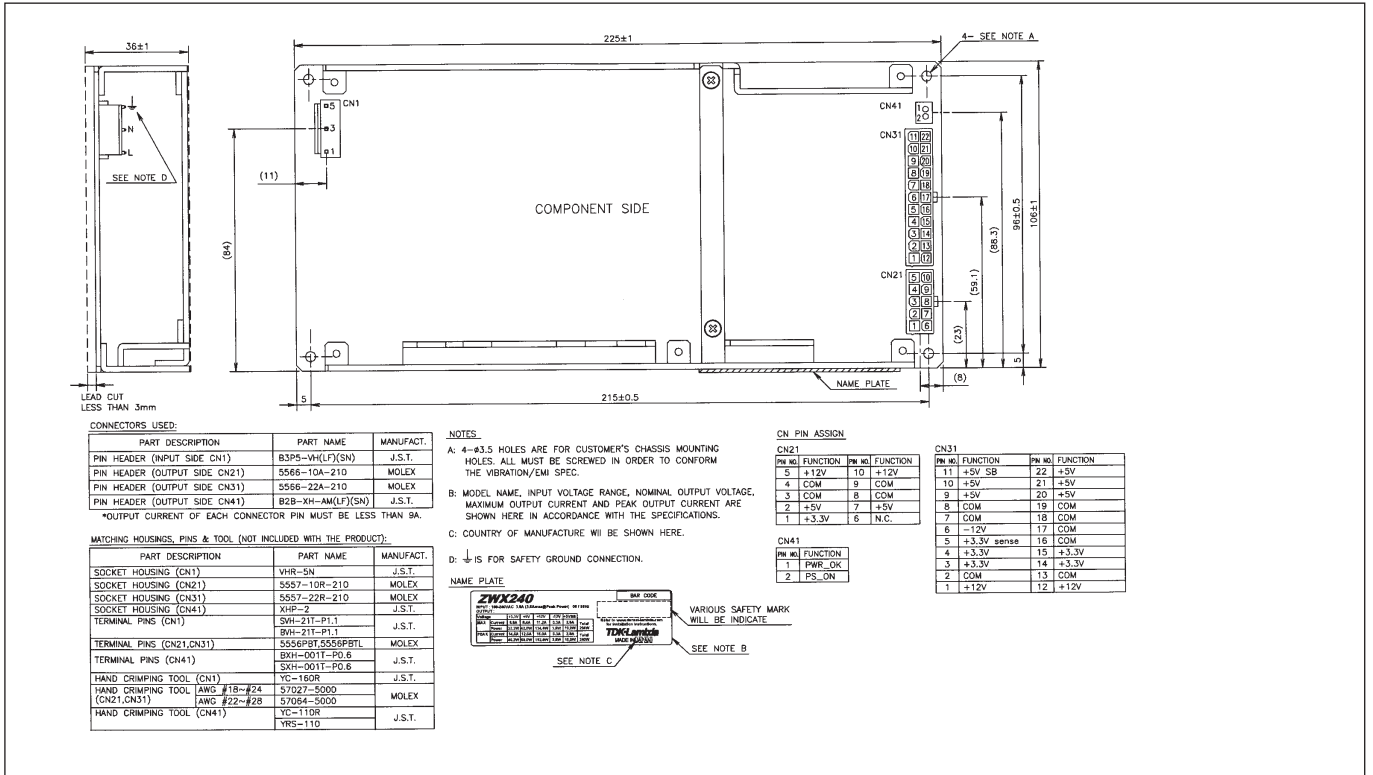
Output Ratings Table above

- Maximum combined power of V1 & V2: 32W convection, 54W forced air, 63W peak
- V3-1 & V3-2 combined current limited to 10.9A (131W)
- V3-1 & V3-2 combined current limited to 22A (264W)

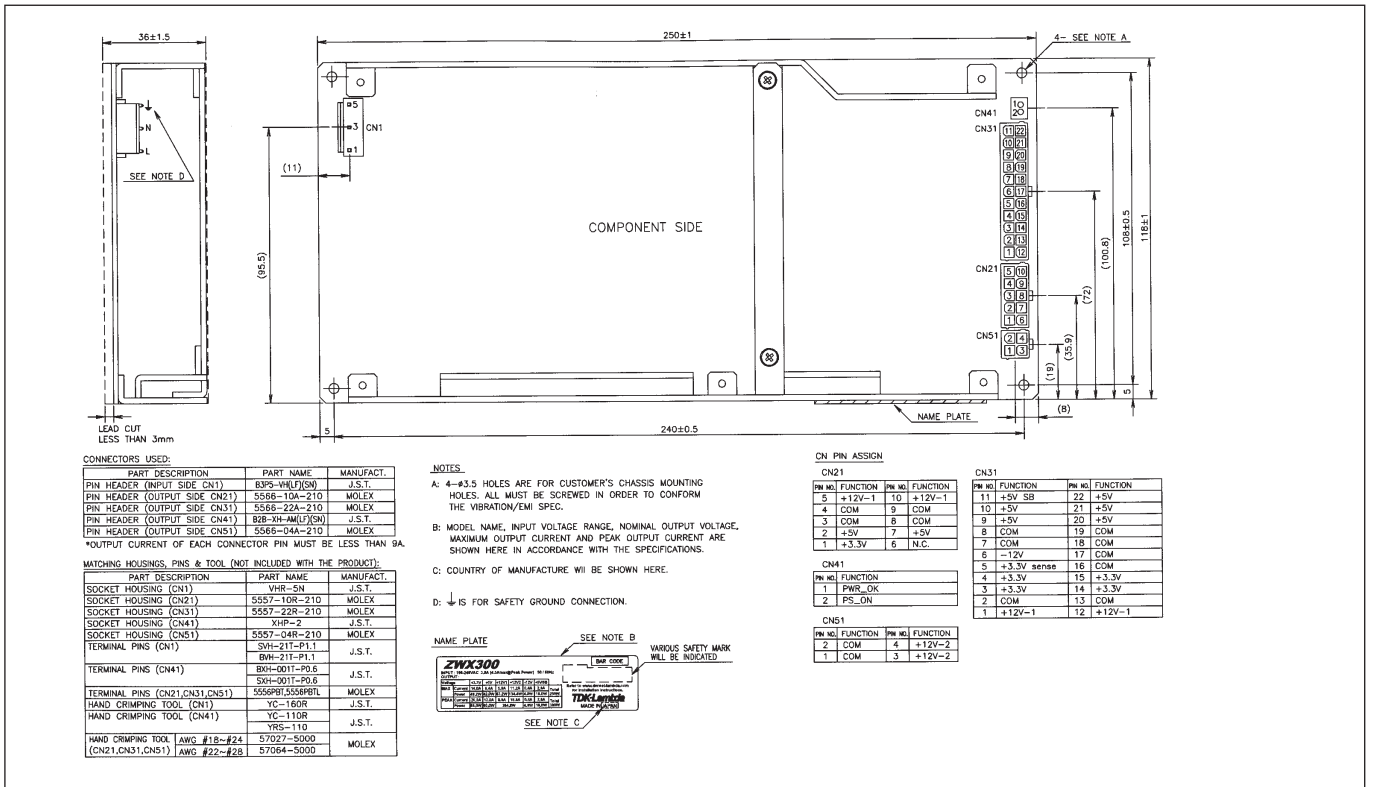
Outline Drawing ZWX180 Series



Outline Drawing ZWX240 Series



Outline Drawing ZWX300 Series



TDK-LAMBDA EMEA

www.emea.tdk-lambda.com



TDK-Lambda France SAS

Route de Grivery
ZAC des Delaches
CS 41077
91978 Courtaboeuf Cedex
France
Tel: +33 1 60 12 71 65
Fax: +33 1 60 12 71 66
france@fr.tdk-lambda.com
www.fr.tdk-lambda.com



Italy Sales Office
Via dei Lavoratori 128/130
20092 Cinisello Balsamo (MI)
Italy
Tel: +39 02 61 29 38 63
Fax: +39 02 61 29 09 00
info.italia@it.tdk-lambda.com
www.it.tdk-lambda.com



TDK-Lambda Germany GmbH

Karl-Bold-Strasse 40
77855 Achern
Germany
Tel: +49 7841 666 0
Fax: +49 7841 5000
info.germany@de.tdk-lambda.com
www.de.tdk-lambda.com



Austria Sales Office
Aredstrasse 22
2544 Leobersdorf
Austria
Tel: +43 2256 655 84
Fax: +43 2256 645 12
info.germany@de.tdk-lambda.com
www.de.tdk-lambda.com



TDK-Lambda UK Ltd.

Kingsley Avenue
Ilfracombe
Devon EX34 8ES
United Kingdom
Tel: +44 (0) 12 71 85 66 66
Fax: +44 (0) 12 71 86 48 94
powersolutions@uk.tdk-lambda.com
www.uk.tdk-lambda.com



Nemic Lambda Ltd.

Kibbutz
Givat Hashlosha 48800
Israel
Tel: +9 723 902 4333
Fax: +9 723 902 4777
info@nemic.co.il
www.nemic.co.il



Russia

Technical Support:
St Petersburg
Tel: +7 (812) 6580463
Sales:
Moscow
Tel: +7 (499) 7557732
info@tdk-lambda.ru
www.tdk-lambda.ru

LOCAL DISTRIBUTION

