



Chipsmall Limited consists of a professional team with an average of over 10 year of expertise in the distribution of electronic components. Based in Hongkong, we have already established firm and mutual-benefit business relationships with customers from,Europe,America and south Asia,supplying obsolete and hard-to-find components to meet their specific needs.

With the principle of “Quality Parts,Customers Priority,Honest Operation,and Considerate Service”,our business mainly focus on the distribution of electronic components. Line cards we deal with include Microchip,ALPS,ROHM,Xilinx,Pulse,ON,Everlight and Freescale. Main products comprise IC,Modules,Potentiometer,IC Socket,Relay,Connector.Our parts cover such applications as commercial,industrial, and automotives areas.

We are looking forward to setting up business relationship with you and hope to provide you with the best service and solution. Let us make a better world for our industry!



Contact us

Tel: +86-755-8981 8866 Fax: +86-755-8427 6832

Email & Skype: info@chipsmall.com Web: www.chipsmall.com

Address: A1208, Overseas Decoration Building, #122 Zhenhua RD., Futian, Shenzhen, China



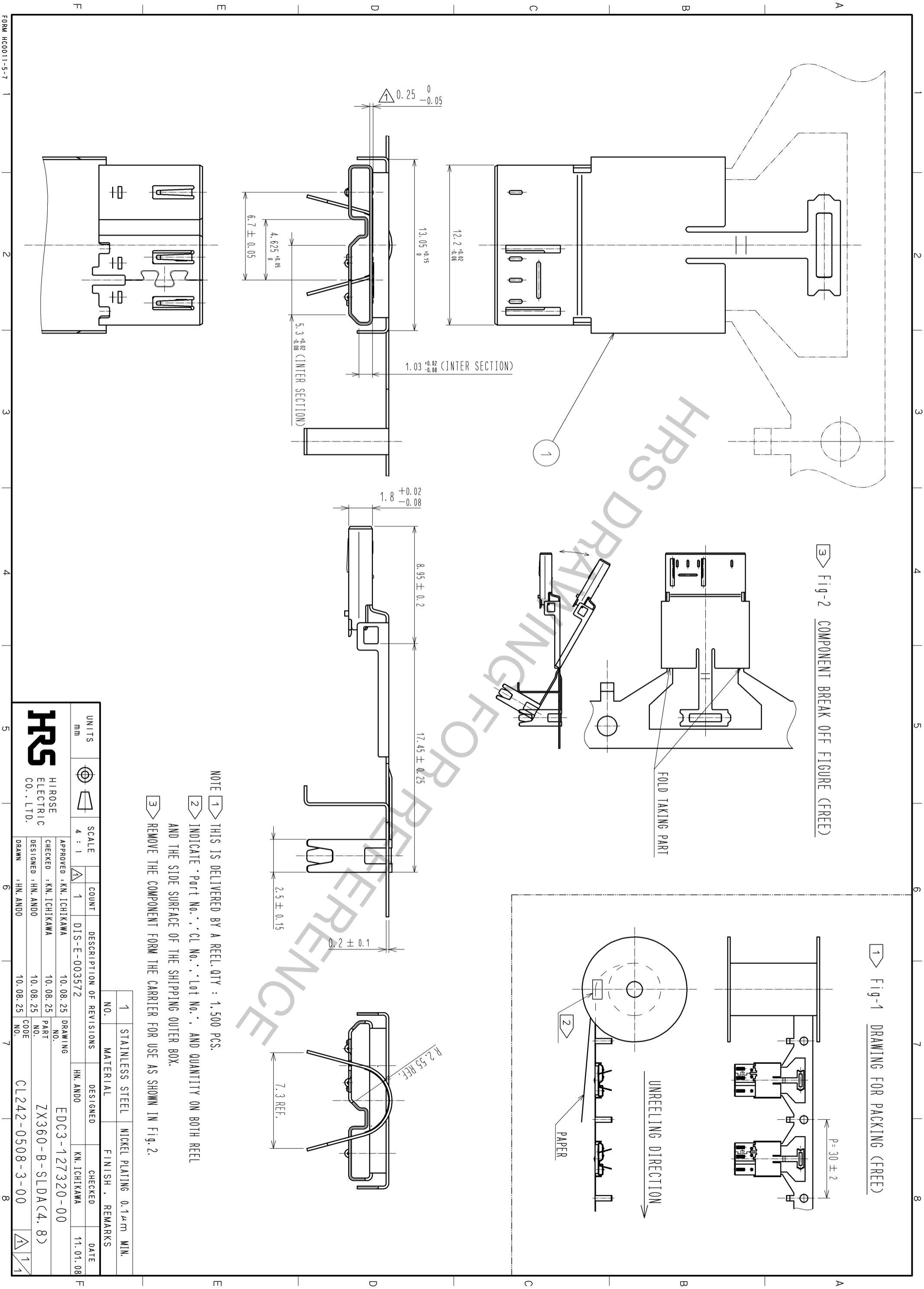


Fig-2 COMPONENT BREAK OFF FIGURE (FREE)

Fig-1 DRAWING FOR PACKING (FREE)

- NOTE
- 1 THIS IS DELIVERED BY A REEL. QTY : 1,500 PCS.
 - 2 INDICATE Part No., Cl No., Lot No., AND QUANTITY ON BOTH REEL AND THE SIDE SURFACE OF THE SHIPPING OUTER BOX.
 - 3 REMOVE THE COMPONENT FORM THE CARRIER FOR USE AS SHOWN IN Fig. 2.

NO.	MATERIAL	FINISH	REMARKS
1	STAINLESS STEEL	NICKEL PLATING 0.14μm MIN.	

UNITS	SCALE	COUNT	DESCRIPTION OF REVISIONS	NO.	DESIGNED	CHECKED	DATE
mm	4 : 1	1	DIS-E-003572		HN. ANDO	KN. ICHIKAWA	11. 01. 08
APPROVED : KN. ICHIKAWA				10. 08. 25	DRAWING		
CHECKED : KN. ICHIKAWA				10. 08. 25	PART NO.		
DESIGNED : HN. ANDO				10. 08. 25	ZX360-B-SLDA(4. 8)		
DRAWN : HN. ANDO				10. 08. 25	CODE NO.		
					CL242-0508-3-00		



HIROSE ELECTRIC CO., LTD.