



Chipsmall Limited consists of a professional team with an average of over 10 year of expertise in the distribution of electronic components. Based in Hongkong, we have already established firm and mutual-benefit business relationships with customers from,Europe,America and south Asia,supplying obsolete and hard-to-find components to meet their specific needs.

With the principle of “Quality Parts,Customers Priority,Honest Operation,and Considerate Service”,our business mainly focus on the distribution of electronic components. Line cards we deal with include Microchip,ALPS,ROHM,Xilinx,Pulse,ON,Everlight and Freescale. Main products comprise IC,Modules,Potentiometer,IC Socket,Relay,Connector.Our parts cover such applications as commercial,industrial, and automotives areas.

We are looking forward to setting up business relationship with you and hope to provide you with the best service and solution. Let us make a better world for our industry!



Contact us

Tel: +86-755-8981 8866 Fax: +86-755-8427 6832

Email & Skype: info@chipsmall.com Web: www.chipsmall.com

Address: A1208, Overseas Decoration Building, #122 Zhenhua RD., Futian, Shenzhen, China



COUNT	DESCRIPTION OF REVISIONS	BY	CHKD	DATE	COUNT	DESCRIPTION OF REVISIONS	BY	CHKD	DATE
△					△				
△					△				
APPLICABLE STANDARD		USB2.0 SPECIFICATION AND MICRO-USB CABLES AND CONNECTORS SPECIFICATION							
RATING	OPERATING TEMPERATURE RANGE	-30 °C TO +85 °C			STORAGE TEMPERATURE RANGE	-30 °C TO +85 °C			
	VOLTAGE	AC 30V			OPERATING HUMIDITY RANGE	— % TO — %			
	CURRENT	① 1 A/pin			APPLICABLE CABLE	—			
	① SIGNAL ONLY ② POWER APPLY	② 1.8 A/pin (PIN No.1,5) 0.5 A/pin (PIN No.2-4)							
SPECIFICATIONS									
ITEM		TEST METHOD			REQUIREMENTS			QT	AT
CONSTRUCTION									
GENERAL EXAMINATION		VISUALLY AND BY MEASURING INSTRUMENT.			ACCORDING TO DRAWING.			×	×
MARKING		CONFIRMED VISUALLY.						×	×
ELECTRICAL CHARACTERISTICS									
CONTACT RESISTANCE		100 mA (DC OR 1000 Hz).			30 mΩ MAX.			×	×
INSULATION RESISTANCE		500 V DC.			100 MΩ MIN.			×	×
VOLTAGE PROOF		100 V AC FOR 1 min.			NO FLASHOVER OR BREAKDOWN.			×	×
CAPASITANCE		MEASURE ADJACENT TWO CONTACTS AT 1000±10Hz AC VOLTAGE.			2 pF MAX			×	—
MECHANICAL CHARACTERISTICS									
INSERTION AND WITHDRAWAL FORCES		A MAXIMUM RATE OF 12.5mm/min. MEASURED BY APPLICABLE CONNECTOR.			INSERTION FORCE 35 N MAX. WITHDRAWAL FORCE 8 N MIN.			×	—
MECHANICAL OPERATION		10000 TIMES INSERTIONS AND EXTRACTATIONS. MATING SPEED - MECHANICALLY OPERATED : 500 CYCLES / h - MANUALLY OPERATED : 200 CYCLES / h			① CONTACT RESISTANCE : NO INCREASE OF MORE THAN 10 mΩ FROM INITIAL VALUE. ② INSERTION FORCE 35 N MAX. WITHDRAWAL FORCE 8 N MIN. ③ NO DAMAGE, CRACK AND LOOSENESS, OF PARTS.			×	—
VIBRATION		FREQUENCY 10 TO 55 Hz, SINGLE AMPLITUDE 0.75 mm, AT 2 h, FOR 3 AXIAL DIRECTIONS, TOTAL 6 h.			① NO ELECTRICAL DISCONTINUITY OF 1 μs. ② NO DAMAGE, CRACK AND LOOSENESS, OF PARTS.			×	—
RANDOM VIBRATION		FREQUENCY 50 TO 2000 Hz, AT 15 min, FOR 3 AXIAL DIRECTIONS.						×	—
SHOCK		490m/s ² DIRECTIONS OF PULSE 11 ms AT 3 TIMES FOR 6 DIRECTIONS, TOTAL 18 TIMES.						×	—
ENVIRONMENTAL CHARACTERISTICS									
THERMAL SHOCK		TEMP -55 → 15 TO 35 → 85 → 15 TO 35 °C TIME 30 → 2 TO 3 → 30 → 2 TO 3 min UNDER 10 CYCLES. (MATING APPLICABLE CONNECTOR)			① CONTACT RESISTANCE : 70 mΩ MAX. ② INSULATION RESISTANCE : 10 MΩ MIN. ③ NO DAMAGE, CRACK AND LOOSENESS, OF PARTS.			×	—
HUMIDITY LIFE		TEMPERATURE -10~65 °C, HUMIDITY 90 TO 98 %, UNDER 7 CYCLES (168 h) (MATING APPLICABLE CONNECTOR)			NO DAMAGE, CRACK AND LOOSENESS, OF PARTS.			×	—
REMARKS					DRAWN	DESIGNED	CHECKED	APPROVED	RELEASED
HIROSE will not guarantee the performance on these specifications in case this product will be mated with the others which is not HIROSE's.					Y. Takeuchi	Y. Takeuchi	M. Kobayashi	Shinji	ENG 07.3.12 DEPT
Unless otherwise specified, refer to USB2.0 or EIA364					07.03.13	07.03.13	07.03.13	07.03.13	
Note QT:Qualification Test AT:Assurance Test ×:Applicable Test									
HRS HIROSE ELECTRIC CO., LTD.					SPECIFICATION SHEET PART NO. ZX62D-AB-5P8				
CODE NO.(OLD)		DRAWING NO.			CODE NO.			1/2	
CL		ELC4-126264			CL242-0027-5				

SPECIFICATIONS

ITEM	TEST METHOD	REQUIREMENTS	QT	AT
DRY HEAT	EXPOSED AT $+85 \pm 2$ °C, 96 h. (MATING APPLICABLE CONNECTOR)	NO DAMAGE, CRACK AND LOOSENESS, OF PARTS.	×	—
COLD	EXPOSED AT -40 ± 2 °C, 96 h. (MATING APPLICABLE CONNECTOR)	NO DAMAGE, CRACK AND LOOSENESS, OF PARTS.	×	—
CORROSION SALT MIST	EXPOSED IN 5 % SALT WATER, 35 °C FOR 48 h.	NO HEAVY CORROSION.	×	—
RESISTANCE TO SOLDERING HEAT	A PROFILE IS SHOWN IN FIG-1, UNDER 2 CYCLES	NO DAMAGE, CRACK AND LOOSENESS, OF PARTS.	×	—

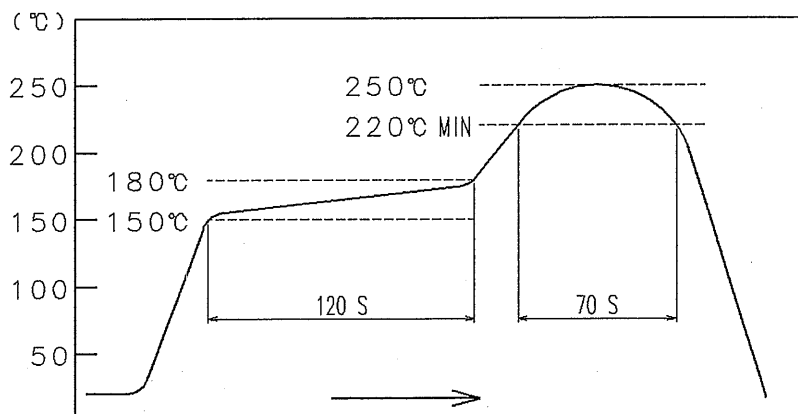


FIG - 1 RESISTANCE TO SOLDERING HEAT
(TEMPERATURE AT TOP SURFACE OF CONECTOR)

■ RECOMMENDED PROFILE REFERS TO FIG - 2.
(TEMPERATURE AT SMT LEADS)

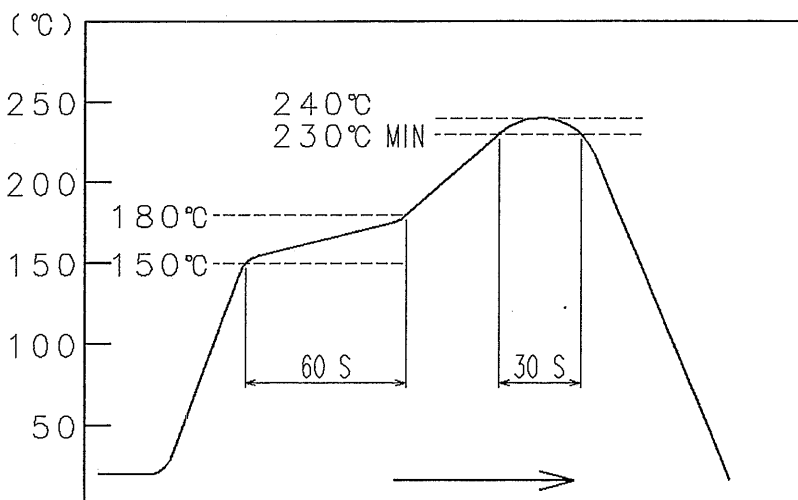
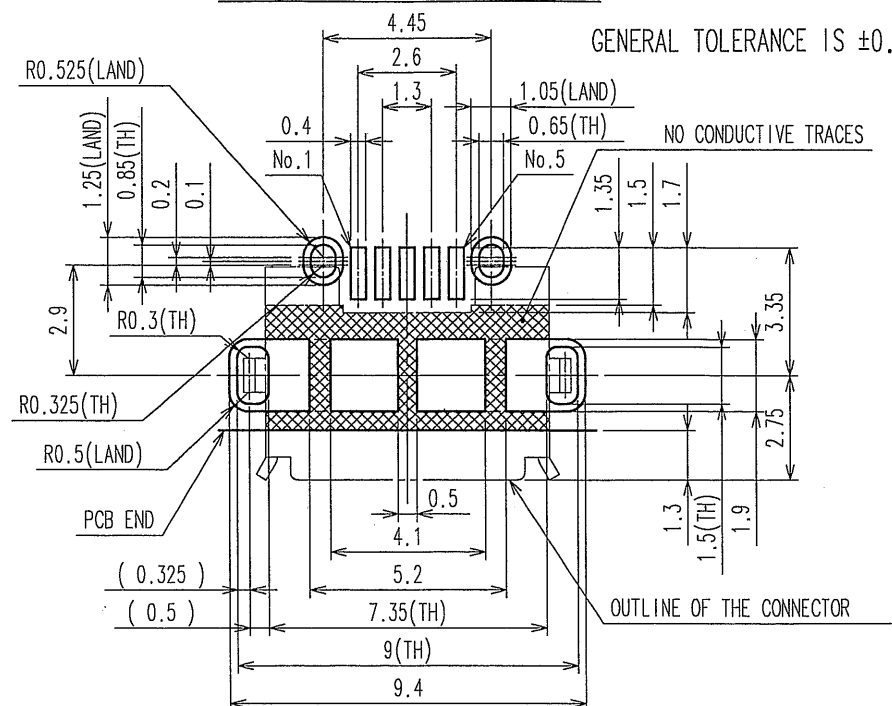
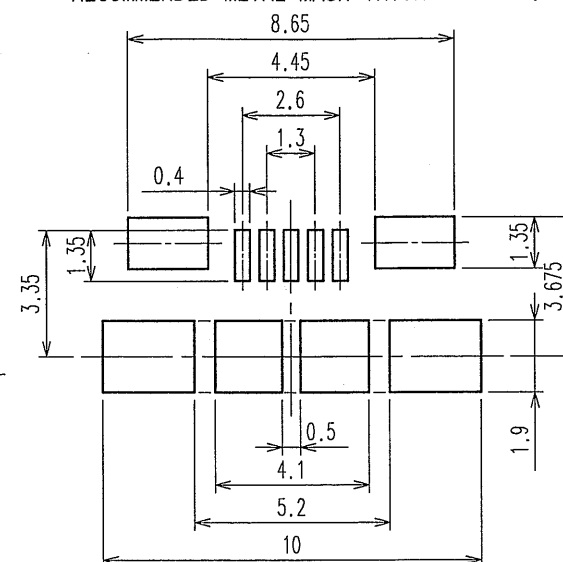


FIG - 2 RECOMMENDED REFLOW PROFILE TEMPERATURE

REMARKS HIROSE will not guarantee the performance on these specifications in case this product will be mated with the others which is not HIROSE's.	DRAWN	DESIGNED	CHECKED	APPROVED	RELEASED
	<i>Y. Takeuchi</i>	<i>Y. Takeuchi</i>	<i>H. Kojima</i>	<i>[Signature]</i>	<div style="border: 1px solid black; border-radius: 50%; padding: 5px; text-align: center;"> ENG 07.3.12 DEPT </div>
Unless otherwise specified, refer to USB2.0 or EIA364	07.03.13	07.03.13	07.03.13	07.03.13	
Note QT:Qualification Test AT:Assurance Test ×:Applicable Test					
HIROSE ELECTRIC CO., LTD.		SPECIFICATION SHEET		PART NO. ZX62D-AB-5P8	
CODE NO.(OLD) CL	DRAWING NO. ELC4-126264	CODE NO. CL242-0027-5			2

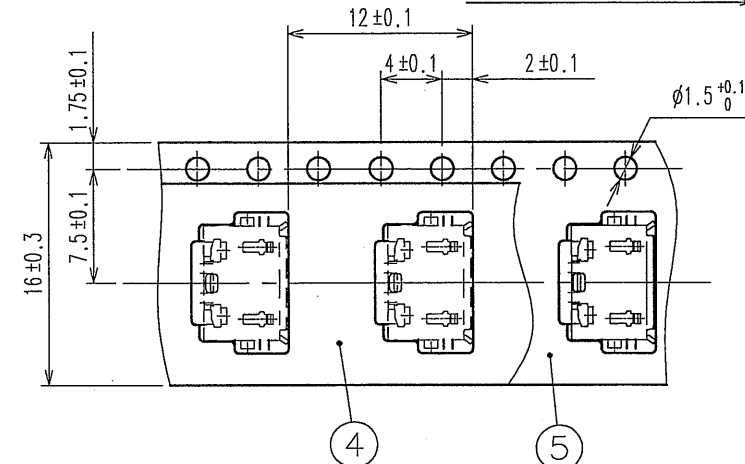
RECOMMENDED PATTERN

GENERAL TOLERANCE IS ± 0.05

RECOMMENDED METAL MASK THICKNESS: $t=0.10$ 

4 PACKING DETAIL (2 : 1)

UNREELING DIRECTION

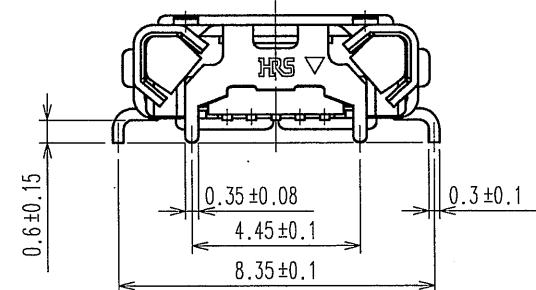
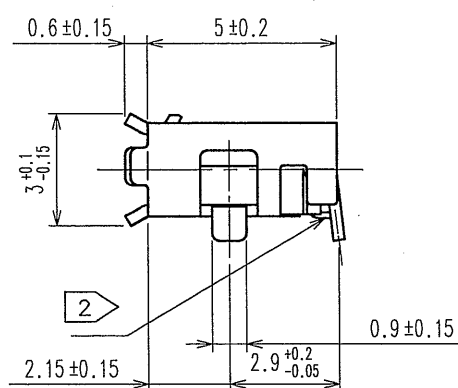
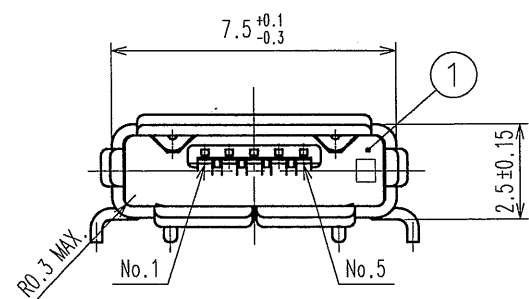
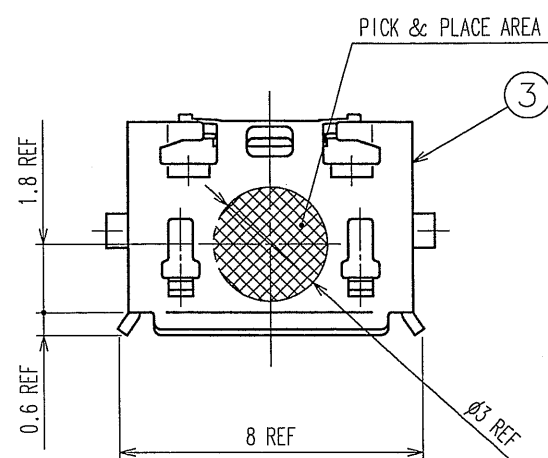
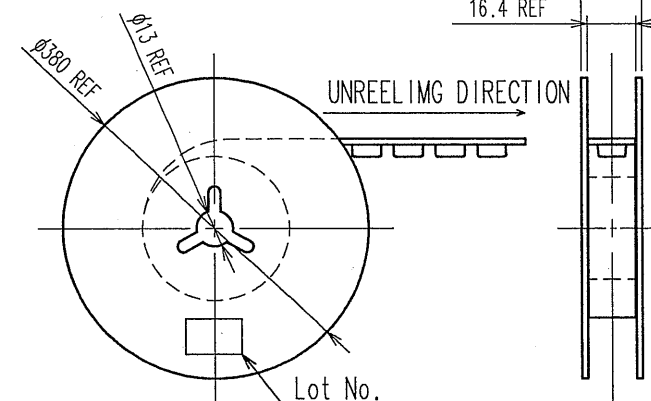


REEL (FREE)

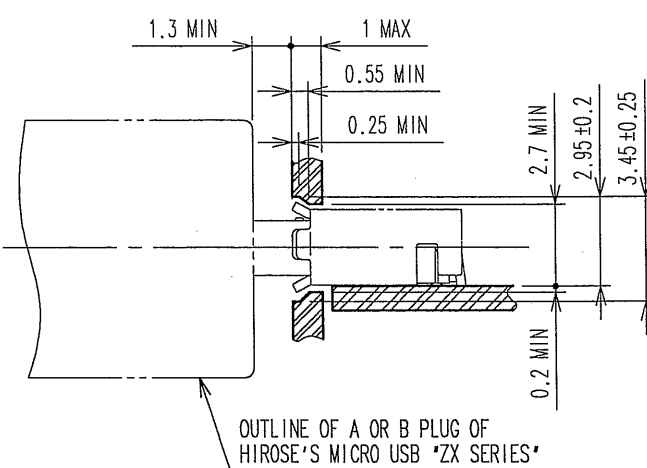
22.4 REF

16.4 REF

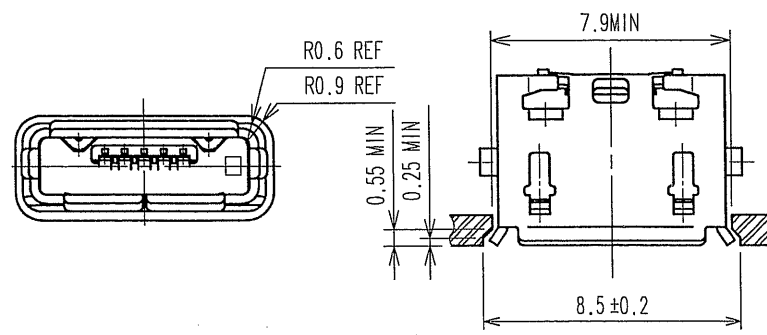
UNREEL IMG DIRECTION



MATED WITH CORRESPONDING PLUG(4 : 1)



RECOMMENDED PANEL CUTOUT (4 : 1)



NOTES 1 INTERFACE DIMENSIONS CONFORMS TO USB2.0 SPECIFICATION.

2 CO-PLANARITY IS WITHIN 0.08mm.

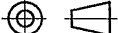

3 PLATING

CONTACT AREA : GOLD $0.75\mu\text{m}$ MIN.

LEAD AREA : GOLD 0,05 μ m MIN.

UNDER PLATING: NICKEL 2μ m MIN.

4 PER REEL : 2000 pcs.

2	COPPER ALLOY	3	3	STAINLESS STEEL	UNDER PLATING : NICKEL MOUNTING AREA : TIN LUBRICANT
1	LCP	COLOR GRAY UL94V-0			
NO.	MATERIAL	FINISH, REMARKS	NO.	MATERIAL	FINISH, REMARKS
CODE NO. (OLD)			DRAWN Y. Takeuchi 07.03.27	DESIGNED Y. Takeuchi 07.03.27	CHECKED H. Kobayashi 07.03.28
					APPROVED [Signature] 07.03.28
			RELEASED ENG 07.3.28 DEPT		
		DRAWING NO. EDC3-126264		PART NO. ZX62D-AB-5P8	
SCALE 5 : 1		 HIROSE ELECTRIC CO., LTD		CODE NO. CL242-0027-5	
UNITS					