



Chipsmall Limited consists of a professional team with an average of over 10 year of expertise in the distribution of electronic components. Based in Hongkong, we have already established firm and mutual-benefit business relationships with customers from,Europe,America and south Asia,supplying obsolete and hard-to-find components to meet their specific needs.

With the principle of “Quality Parts,Customers Priority,Honest Operation,and Considerate Service”,our business mainly focus on the distribution of electronic components. Line cards we deal with include Microchip,ALPS,ROHM,Xilinx,Pulse,ON,Everlight and Freescale. Main products comprise IC,Modules,Potentiometer,IC Socket,Relay,Connector.Our parts cover such applications as commercial,industrial, and automotives areas.

We are looking forward to setting up business relationship with you and hope to provide you with the best service and solution. Let us make a better world for our industry!



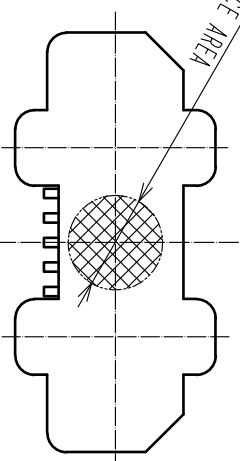
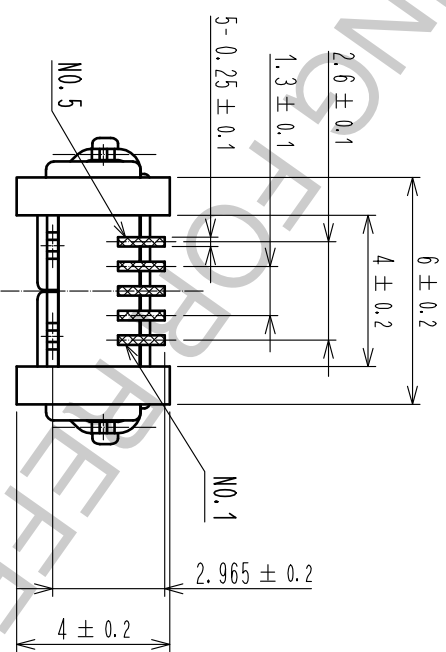
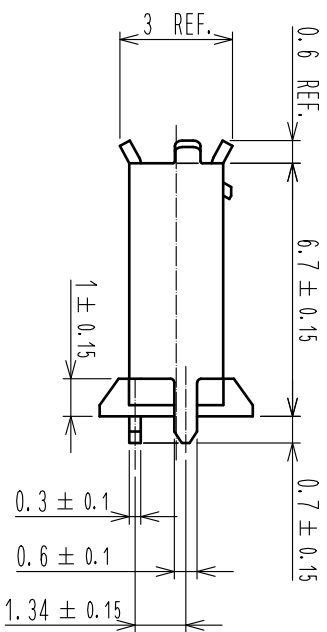
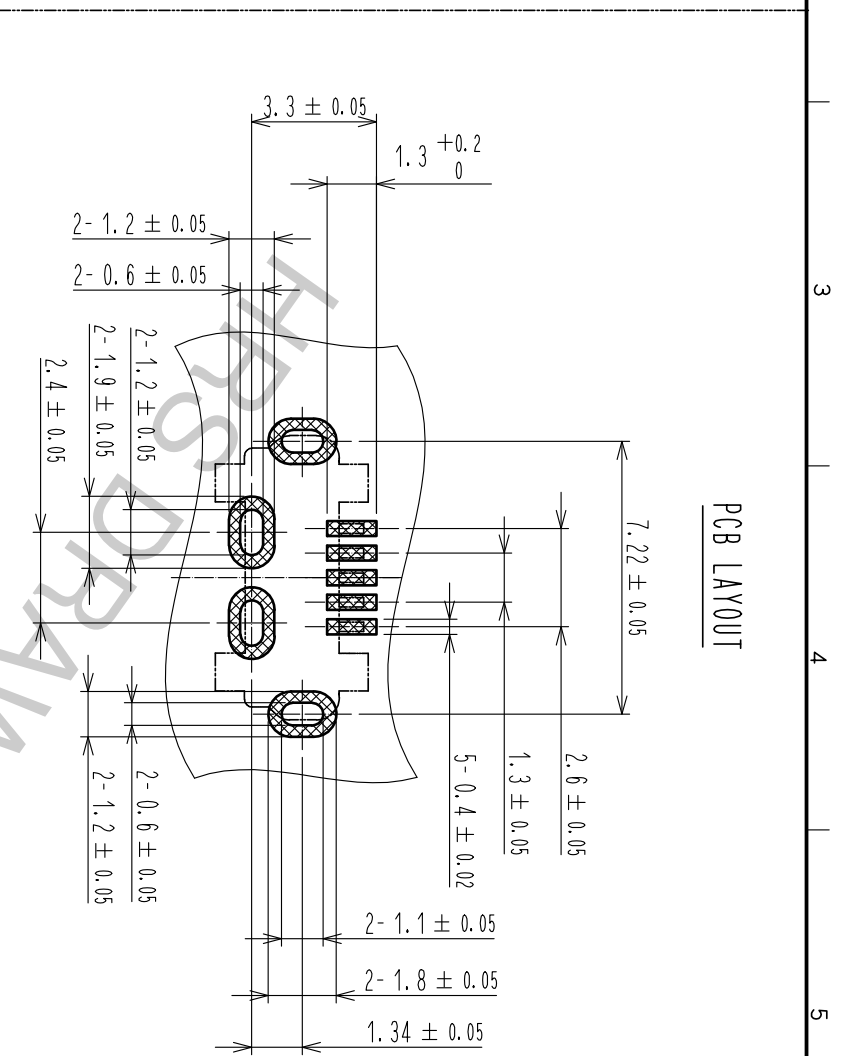
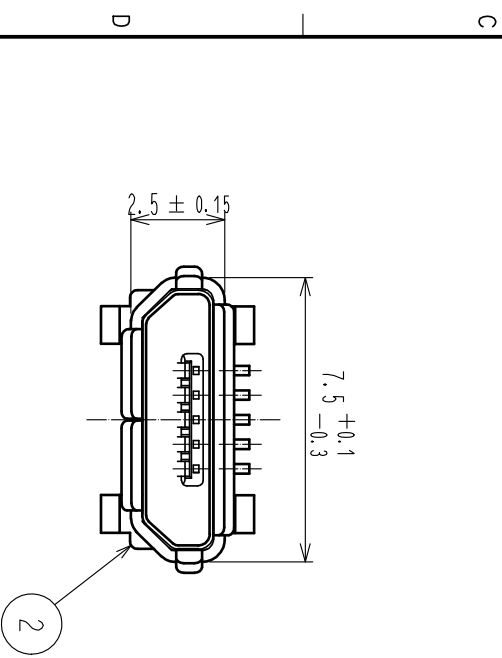
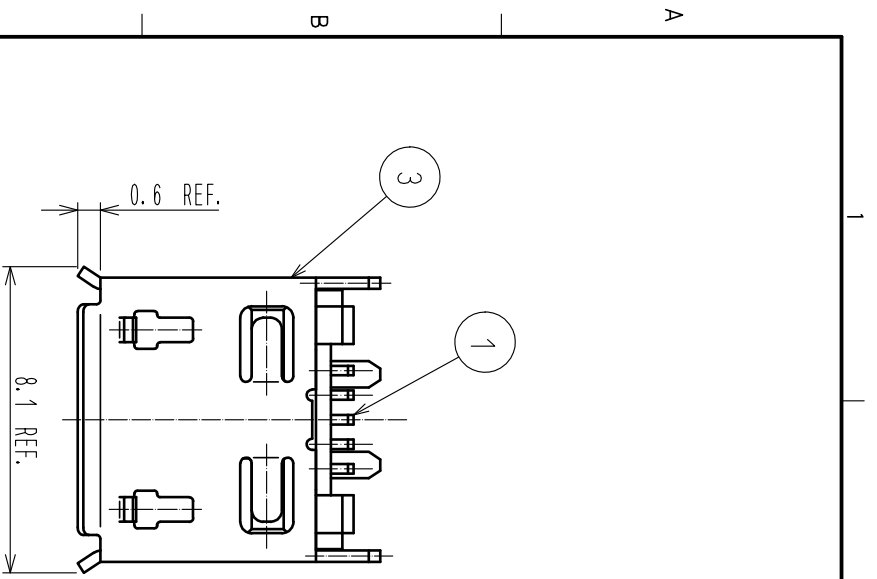
Contact us

Tel: +86-755-8981 8866 Fax: +86-755-8427 6832

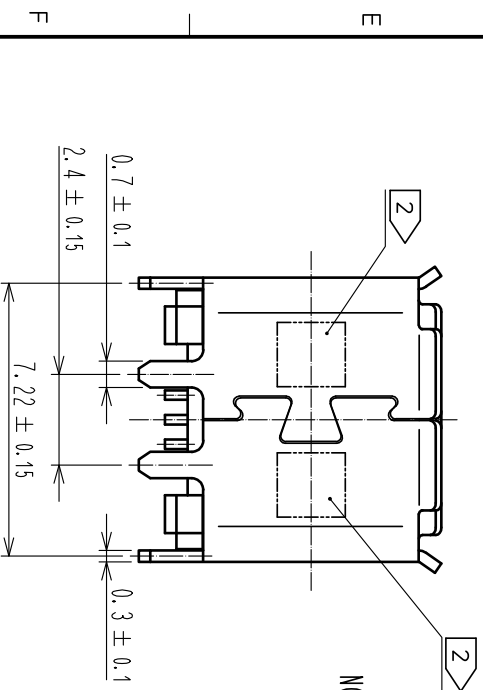
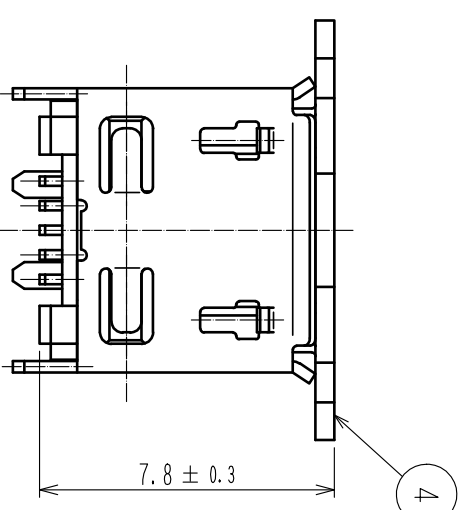
Email & Skype: info@chipsmall.com Web: www.chipsmall.com

Address: A1208, Overseas Decoration Building, #122 Zhenhua RD., Futian, Shenzhen, China





PICK AND PLACE CAP



NOTE 1 CO-PLANARITY IS WITHIN 0.08.

2 LOT NO. SHALL BE INDICATED AT THE POSITION AS SHOWN.
3 PLATING

CONTACT AREA : GOLD PLATE 0.75 μm MIN.
LEAD AREA : GOLD PLATE 0.05 μm MIN.
UNDER PLATING : NICKEL 2 μm MIN.

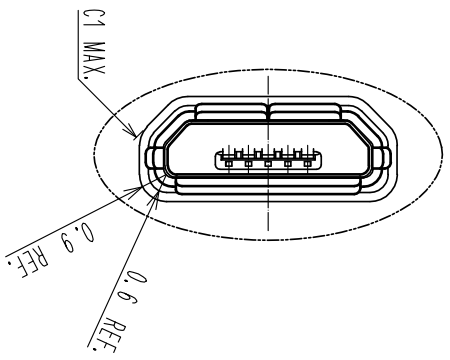
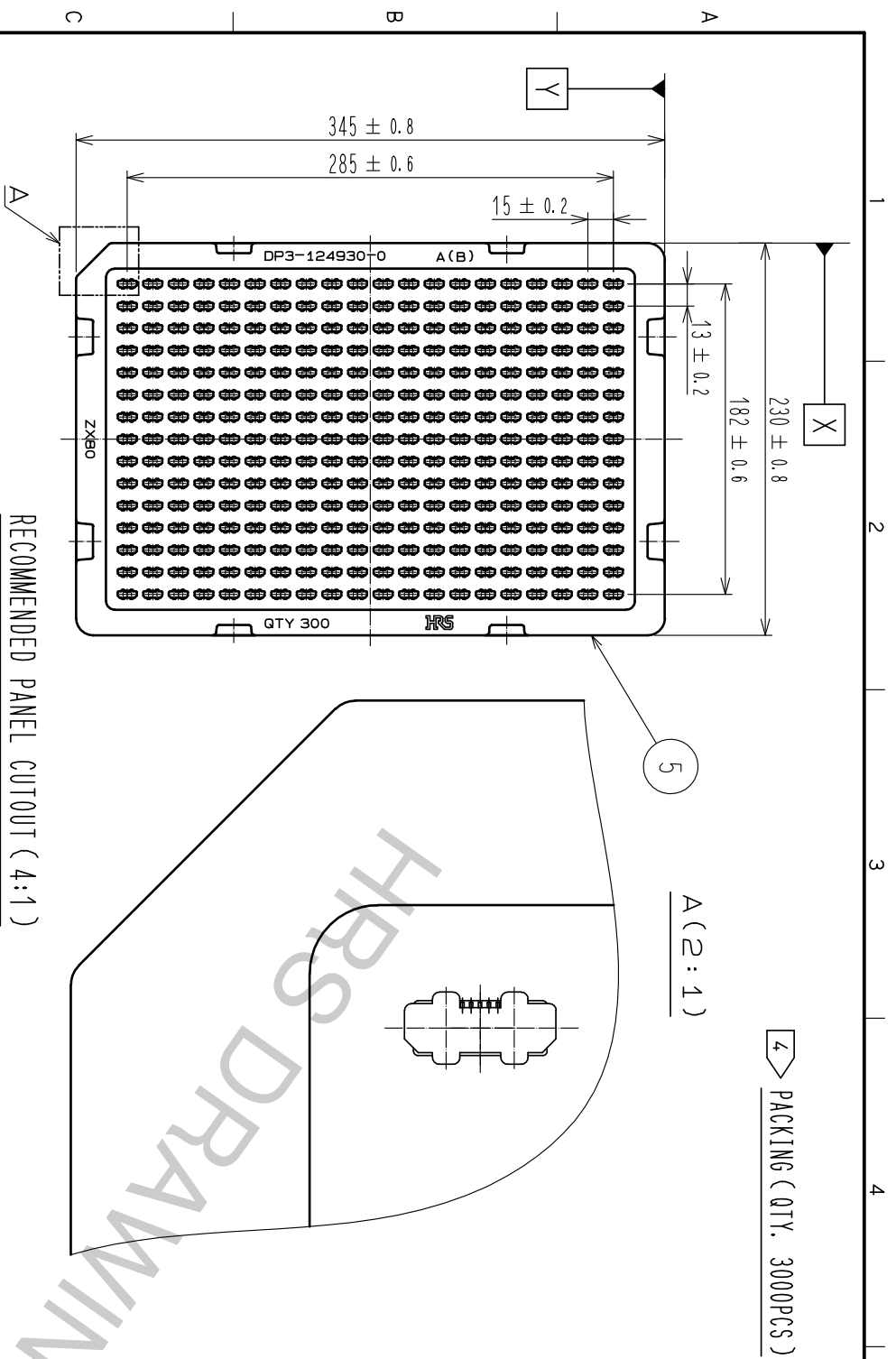
4 PACKING
300 PCS PER TRAY.

5 AS FOR PART NO.3, THE PERFORMANCE REMAINS GOOD EVEN IF THERE IS A RUBBING WOUND BY THE ASSEMBLY PROCESS, AND THE PERFORMANCE REMAINS GOOD EVEN IF THERE IS A DIFFERENCE OF THE COLOR OF PLATING WITH THE MANUFACTURING LOT.

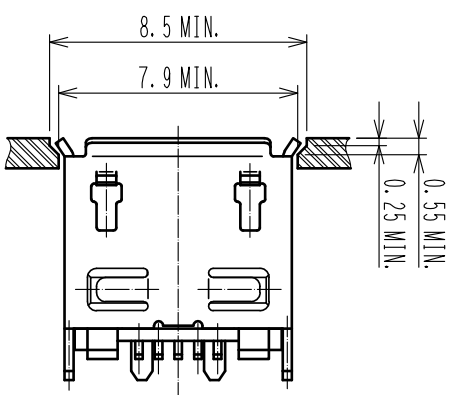
NO.	UNITS	MATERIAL	FINISH	REMARKS	NO.	MATERIAL	FINISH	REMARKS
2	LCP	BLACK	UL94V-0		4	POLYAMIDE RESIN		
1	COPPER ALLOY				3	STAINLESS STEEL	UNDER PLATING: NICKEL 0.2 μm MIN. OVER PLATING : TIN 1 μm MIN. LUBRICANT	
5	PS							

NO.	SCALE	COUNT	DESCRIPTION OF REVISIONS	DESIGNED	CHECKED	DATE
1	5 : 1					

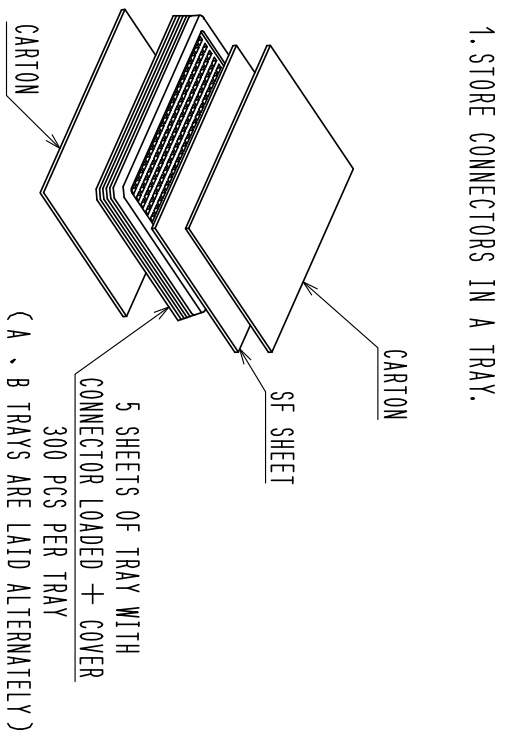
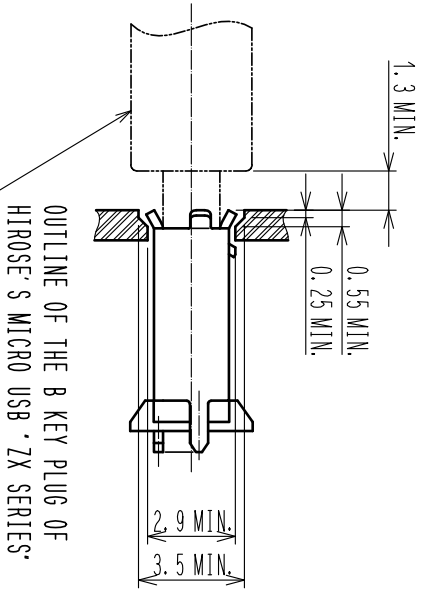
APPROVED	CHECKED	DESIGNED	DRAWING NO.	PART NO.	CODE
MM. NISHIMATSU	KN. ICHIKAWA	TS. ITO	EDC-126723-30-00	ZX80-B-5P(30)	CL242-0051-0-30



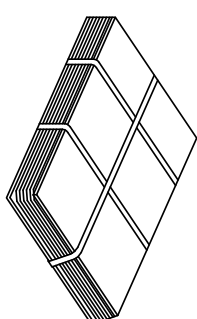
RECOMMENDED PANEL CUTOUT (4:1)



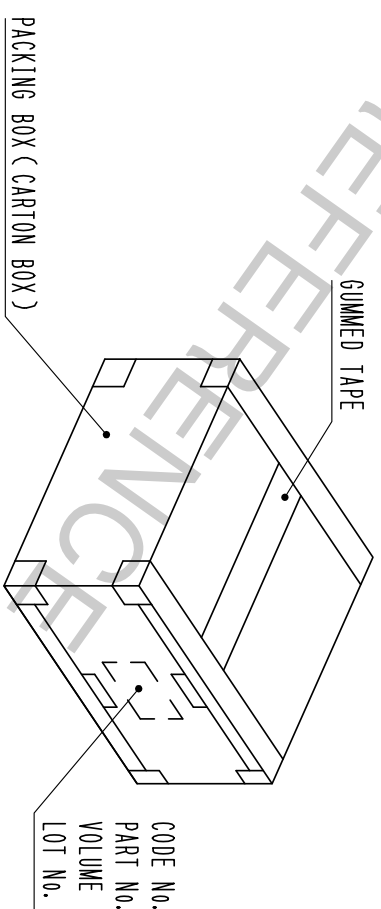
MATED WITH CORRESPONDING PLUG(4:1)



2. BAND TRAYS AS SHOWN BELOW.



3. STORE 2 UNITS OF BANDED TRAY INTO A CARTON BOX (K-1)
(STORE A BOUNDARY PLATE ON TOP OF THE SURFACE. THEN CLOSE THE BOX BY STICKING GUMMED TAPE IN FOUR PARTS)



CODE No.
PART No.
VOLUME
LOT No.

HR5	DRAWING NO.	EDC-126723-30-00
	PART NO.	ZX80-B-5P(30)
	CODE NO.	CL242-0051-0-30